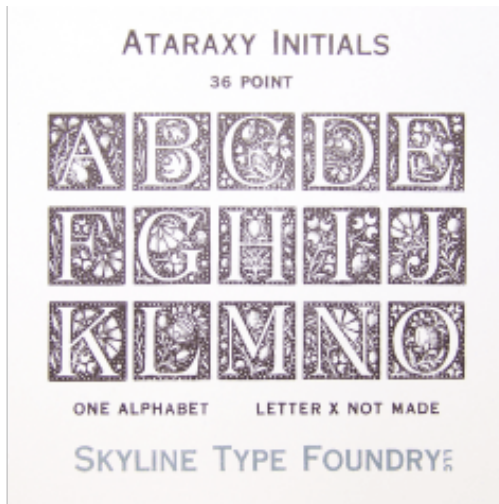


ORNAMENTAL INITIALS



ATARAXY INITIALS - 36PT

These floral initials were cast from matrices made by the Lanston Monotype Co. For reasons unknown, The letter X was deemed unworthy, and was not designed for this set. They were not named but only assigned a number, 448. Lanston also designed a completely different set of ornamental initials in 24 point, but (again, for reasons unknown) assigned the same number to that set. To avoid the confusion that would inevitably flow from using the number, we have arbitrarily chosen Ataraxy as our own name for these.

Price: \$30.00

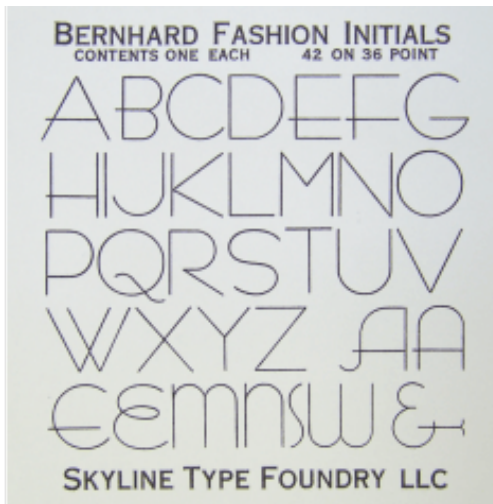


BEN FRANKLIN INITIALS - 36PT

36 Pt.
48 pieces

Contains two of each letter except Q X Y Z, of which there is one each.

Price: \$30.00



BERNHARD FASHION INITIALS - 42 ON 36PT

42 point on 36 point body

Contains one alphabet plus eight alternates and ampersand

Price: \$30.00

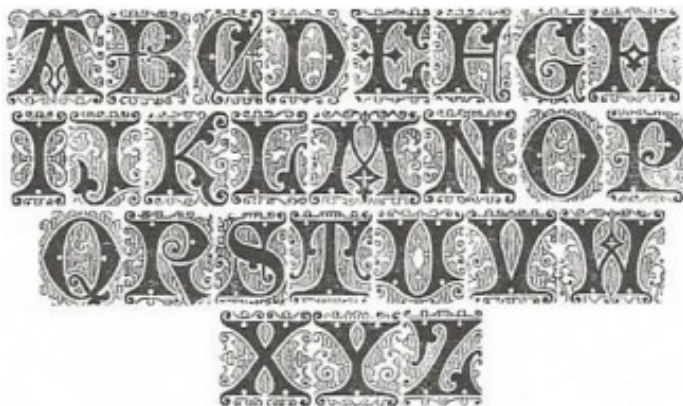


EGMONT INITIALS - 36PT

Contents one of each letter of the alphabet, on 36 point body.

From Intertype, decorative initials designed to be used with their Egmont type face. This is Skyline's best-selling single item and is in its seventh casting.

Price: \$30.00



FILIGREE INITIALS - 24PT

24 Point
2 of each Letter

This set of 19th Century initials was cast from matrices electroplated by Charlie Broad from original type. Some wear on the original types is evident, and granted that 24pt is small for decorative initials, but what a face!

It was the work of Herman Ihlenberg for MacKellar, Smiths & Jordan, originally being a full font with numerous detailed ornaments.

Price: \$30.00

JOHN ALDEN INITIALS CONTENTS 50 PIECES



SKYLINE TYPE FOUNDRY

JOHN ALDEN INITIALS - 36PT

Decorative initials created by the Keystone Type Foundry, to complement their quaint proprietary face John Alden. Both are shown in the 1906 Keystone catalog.

Price: \$30.00

MASSEY ORNAMENTAL INITIALS TWO-COLOR PLUS TINT BLOCK

36 POINT



SKYLINE TYPE FOUNDRY

MASSEY TWO-COLOR INITIALS - 36PT

Classic initials that should be in every printing office. The font contains one complete alphabet each of the base letters and color letters. We have also included a couple of tint blocks, so the initials can actually be done in three colors. The background tint must be printed first, and in a very light color so it does not obscure the initial. In the specimen above, we used the tint block behind the third line of initials—the ink was mixing-white with a small amount of metallic silver. (We got it a little bit *too* light; you can experiment and find what looks good.)

Price: \$50.00



LOMBARDIC CAPITALS - 48PT

48 Point

One alphabet plus alternate T and celtic ornament

These elegant initial letters were from the hand of Fred Goudy in the 1920s, and intended specifically for use with his Goudy Text.

Price: \$35.00