

# COLLECTIONS



## COLLECTION NO. 1

Decorative Corners, all on 36pt em body.

**Price:** \$30.00



## COLLECTION NO. 2

All pieces are 36 point in body size or set width.

**Price:** \$30.00



### COLLECTION NO. 3

Stacking Ornaments

All elements cast sidewise on 30pt body  
 Combinable for 2-color  
 12 elements x 4 each

**Price:** \$30.00



### COLLECTION NO. 4

24pt em body  
 40 of each

**Price:** \$30.00

## COLLECTION NO. 5

DWIGGINS ABSTRACT FLORETS



CONTENTS: 158 PIECES

SKYLINE TYPE FOUNDRY

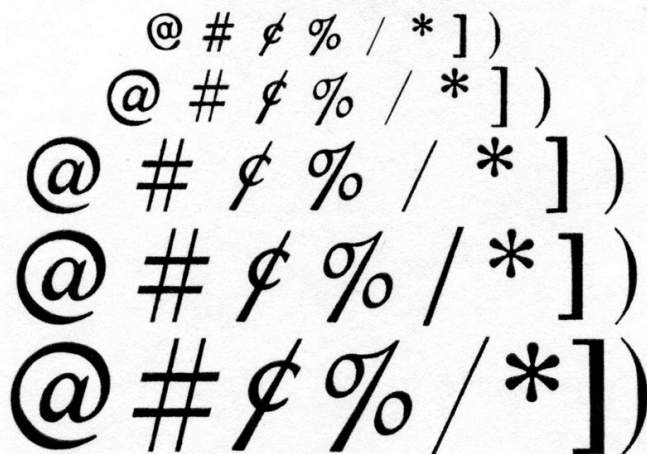
## COLLECTION NO. 5

All are on 12pt body, with various sets

**Price:** \$25.00

## COLLECTION NO. 6

CONTENTS: 190 PIECES



## COLLECTION NO. 6

Sizes: 14, 18, 24, 30 & 36pt

**Price:** \$30.00

## COLLECTION NO. 7

Contains 9 of each element.

All are on 24pt em-body.

**Price:** \$30.00

## COLLECTION No. 7



CONTENTS: 90 PIECES

SKYLINE TYPE FOUNDRY<sup>LLC</sup>

## COLLECTION No. 8

STAN NELSON'S  
GHOST RANCH HORIZON



TOTAL LENGTH 106 PICAS



SKYLINE TYPE FOUNDRY<sup>LLC</sup>

## COLLECTION NO. 8

"You see here a font of cast decorative elements that I designed and engraved by hand while teaching a course in punchcutting at Ghost Ranch near Abiquiu, about 65 miles north of Santa Fe, New Mexico. The border elements were drawn directly from observation of the landscape. Much of the engraving was done while seated in the breezeway of the bunkhouse where I was staying, thus each unit represents an actual place. For the first time they are cast for public distribution by Skyline Type Foundry."

— Stan Nelson, April 2011

**Price:** \$30.00

## COLLECTION NO. 9

PERPETUAL CALENDAR MONTH

Sun	Mon	Tue	Wed	Thu	Fri	Sat
1	2	3	4	5	6	7
8	9	10	11	12	13	14
15	16	17	18	19	20	21
22	23	24	25	26	27	28
29	30	31				
23/30	24/31					

SKYLINE TYPE FOUNDRY

## COLLECTION NO. 9

Perpetual Calendar- the dates can be composed in any configuration.

All pieces are on 18pt body with 24pt set width.

**Price:** \$25.00

## COLLECTION NO. 10



CONTENTS 6 OF EACH

SKYLINE TYPE FOUNDRY

## COLLECTION NO. 10

36pt em body  
6 of each

**Price:** \$45.00

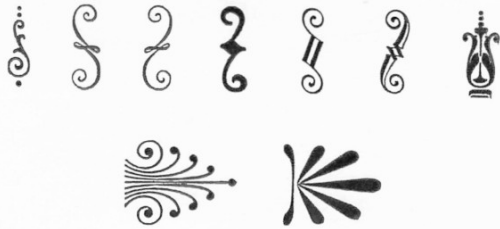
## COLLECTION NO. 11

All elements cast on 24pt body.  
The two larger ones are reversible for use in pairs as ornamental brackets.

**Price:** \$30.00

## COLLECTION NO. 11

CONTENTS: 221 PIECES



SKYLINE TYPE FOUNDRY LLC

## COLLECTION NO. 12

CONTENTS: 120 PIECES

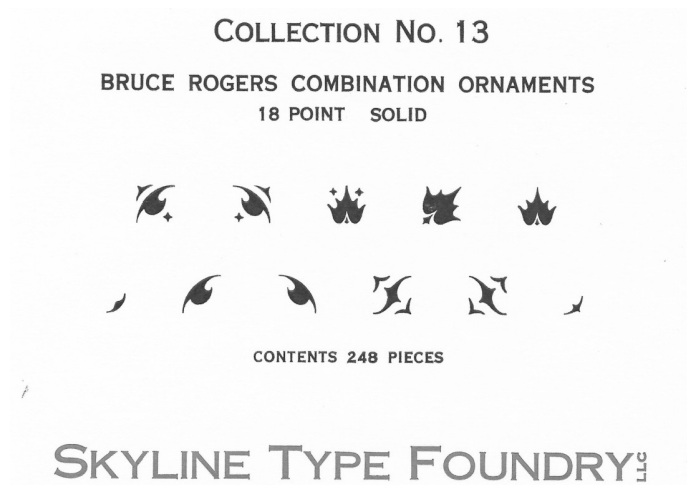


SKYLINE TYPE FOUNDRY LLC

## COLLECTION NO. 12

All elements are on 18pt body.

**Price:** \$30.00



## COLLECTION NO. 13

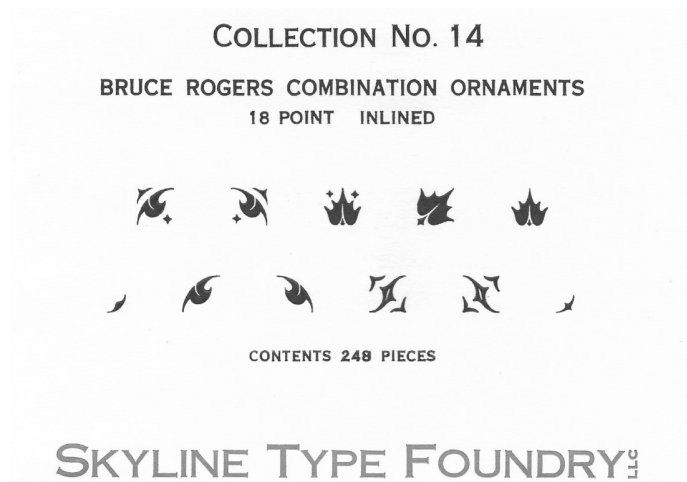
Bruce Rogers Ornaments- Solid, 18 point

248 pieces

Major elements on 18pt em body; two minor elements on 9pt em body. Blank 9pt ems are included to enable composition of the minor elements.

The second photo is an undated Monotype specimen sheet of these ornaments, probably sometime around the late 1930s.

**Price:** \$50.00



## COLLECTION NO. 14

Major elements on 18pt em body; two minor elements on 9pt em body. Blank 9pt ems are included to enable composition of the minor elements.

The second photo is an undated Monotype specimen sheet of these ornaments, probably sometime around the late 1930s.

**Price:** \$50.00

## COLLECTION NO. 15

Body sizes are variously 18, 24 & 36 point.

**Price:** \$30.00

## COLLECTION NO. 15

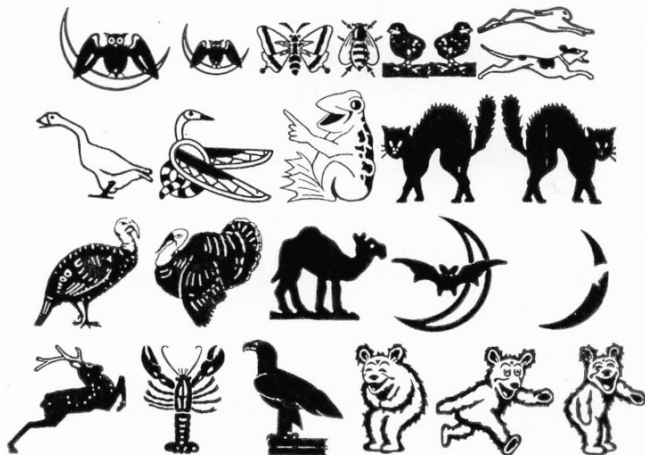
CONTENTS: 76 PIECES



SKYLINE TYPE FOUNDRY

## COLLECTION NO. 16

CONTENTS: 65 PIECES



SKYLINE TYPE FOUNDRY

## COLLECTION NO. 16

Body sizes are variously 12, 18, 30 & 36 point

The three bear characters in the last line of the label specimen are sometimes associated with the Grateful Dead. Here's the story on that, from the music web site *extrachill.com* (boldface added):

Initially designed by artist Bob Thomas to appear on the back cover of the band's 1973 release, *The History of the Grateful Dead, Volume 1 (Bear's Choice)*, the bears have become deeply ingrained in the culture surrounding the Grateful Dead, and have taken on layers of symbolic meaning over the years. They were designed for Owsley "Bear" Stanley, who both engineered and recorded to tape many of the shows that the Grateful Dead performed in the 60s and 70s. **Before the album and the bears, there existed a 36-point lead slug that was used in printing as a font type.** [Sic, sic, and sic.] **Thomas used that leaden bear as his basis for the design,** which features a more cartoon style bear doing the "dancing" motion.

The true origin of the bears is not known, at least by me. They are shown, however in the pre-WWII Monotype specimen book--as are all the elements in this Collection. One final bon mot: the bear



with paw extended was adopted as a logo by the Bear Manufacturing Corp. of Rock Island, Illinois, who operated a series of auto repair shops around the country. As a kid I remember my father taking our car to one in the 1960s for a "lube job". Thinking all that was ancient history, it was quite a surprise recently to find a Bear shop open for business right near the International Printing Museum in L.A.!

**Price:** \$30.00

## COLLECTION NO. 17

CONTENTS: 97 PIECES



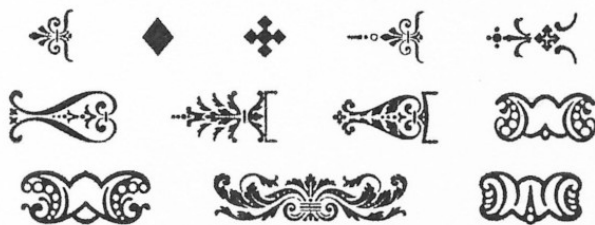
## COLLECTION NO. 17

Owl is on 18pt body, all others 24pt.

**Price:** \$30.00

## COLLECTION NO. 18

CONTENTS: 133 PIECES



SKYLINE TYPE FOUNDRY

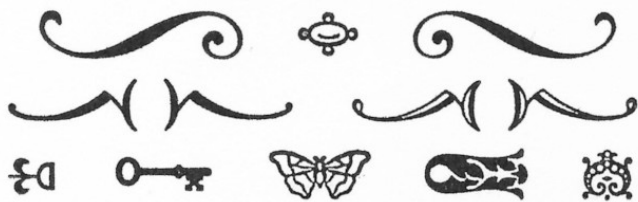
## COLLECTION NO. 18

All elements are on 12pt body.

**Price:** \$25.00

## COLLECTION No. 19

CONTENTS: 116 PIECES



SKYLINE TYPE FOUNDRY<sup>LLC</sup>

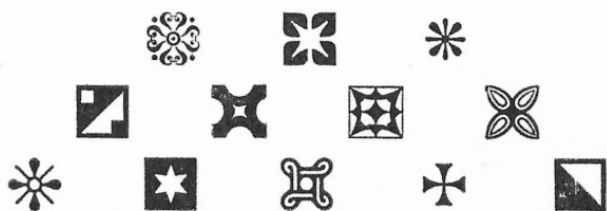
### COLLECTION NO. 19

All elements are on 12pt body.

**Price:** \$25.00

## COLLECTION No. 20

CONTENTS: 216 PIECES



SKYLINE TYPE FOUNDRY<sup>LLC</sup>

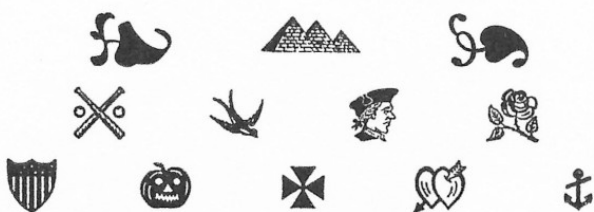
### COLLECTION NO. 20

All elements are on 12pt body.

**Price:** \$25.00

## COLLECTION No. 21

CONTENTS: 195 PIECES



SKYLINE TYPE FOUNDRY<sup>LLC</sup>

### COLLECTION NO. 21

All elements are on 12pt body.

**Price:** \$25.00

## COLLECTION No. 22

CONTENTS: 174 PIECES



SKYLINE TYPE FOUNDRY<sup>LLC</sup>

## COLLECTION NO. 22

All elements are on 12pt body.

**Price:** \$25.00

## COLLECTION No. 23

CONTENTS: 140 PIECES



SKYLINE TYPE FOUNDRY<sup>LLC</sup>

## COLLECTION NO. 23

All elements are on 12pt body.

**Price:** \$25.00

## COLLECTION No. 24

CONTENTS: 86 PIECES



SKYLINE TYPE FOUNDRY<sup>LLC</sup>

## COLLECTION NO. 24

Types are all on 24pt body, 24 or 30 set

**Price:** \$30.00

## COLLECTION No. 25

PERPETUAL CALENDAR MONTH

OVERALL FORM SIZE 21 x 16 PICAS

SUN	MON	TUE	WED	THU	FRI	SAT
1	2	3	4	5	6	7
8	9	10	11	12	13	14
15	16	17	18	19	20	21
22	23	24	25	26	27	28
29	30	31				

## COLLECTION NO. 25

Perpetual Calendar- the dates can be composed in any configuration.

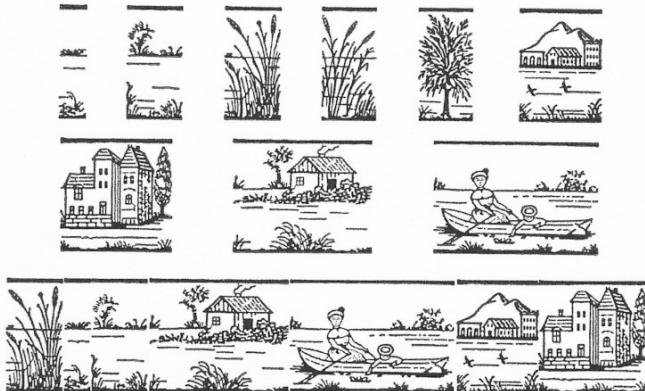
Days are 8pt Optima on 12x36pt body; dates 30pt Lydian Bold on 36pt em.

Eleven quads are included to fill out partial weeks.

**Price:** \$30.00

## COLLECTION No. 26

CONTENTS: 65 PIECES



## COLLECTION NO. 26

Cast on 36pt body.

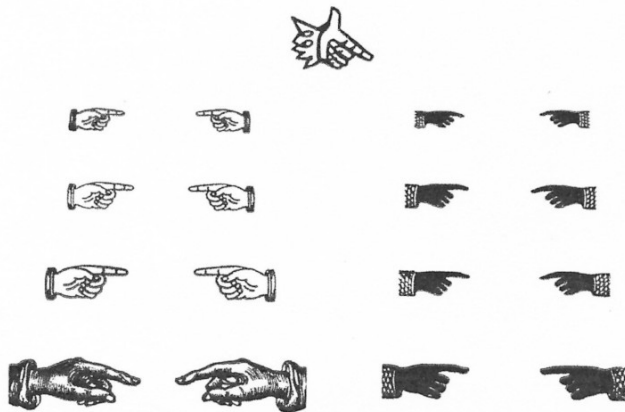
Collection No. 26 is an antique border revived by Charlie Broad at Typefounders of Phoenix in the 1960s. It's part (10 of 19 elements) of the MacKellar, Smiths & Jordan "Combination Border No. 96", released March 31, 1885 and patented May 10, 1887. There is no evidence that CB cut matrices for any of the other elements, alas.

**Price:** \$35.00

SKYLINE TYPE FOUNDRY<sup>LLC</sup>

## COLLECTION No. 27

CONTENTS: 218 PIECES



SKYLINE TYPE FOUNDRY<sup>LLC</sup>

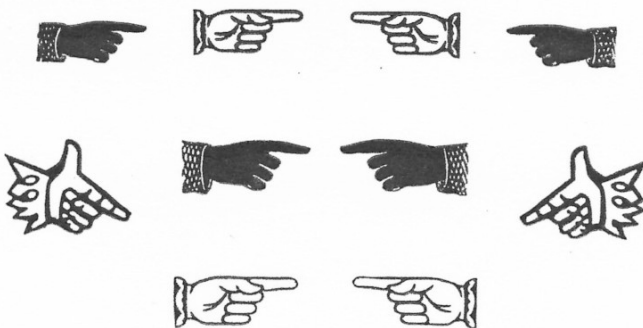
## COLLECTION NO. 27

Body sizes are 6, 8, 10, 12, 18 & 24pt

**Price:** \$30.00

## COLLECTION No. 28

CONTENTS: 80 PIECES

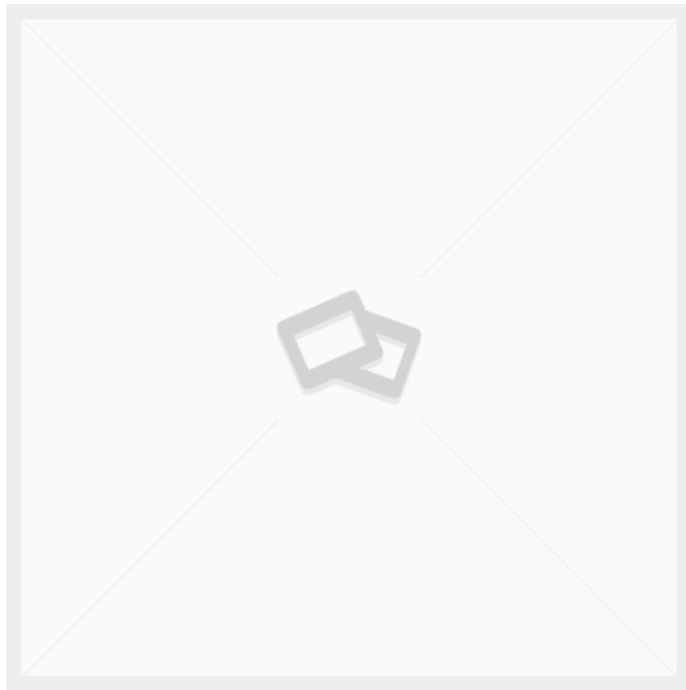


SKYLINE TYPE FOUNDRY<sup>LLC</sup>

## COLLECTION NO. 28

Body sizes are 12, 18 & 30pt.

**Price:** \$30.00



## COLLECTION NO. 29 - MONO-BLOX

**DUE TO A FAILURE OF ONE OF THE  
MATRICES,  
WE ARE UNABLE TO RESTOCK THIS  
COLLECTION.**

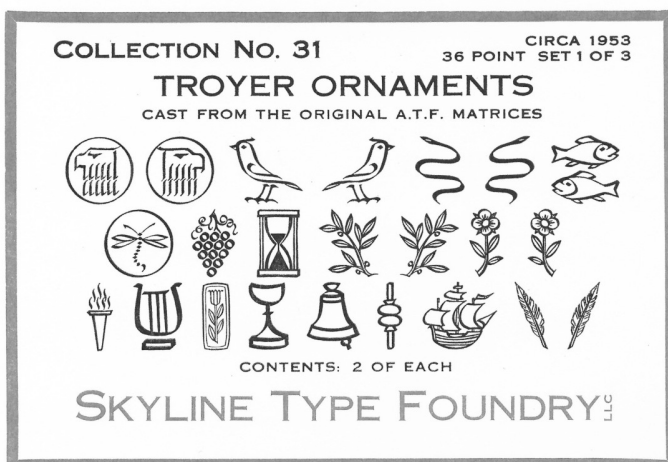
**Price:** \$70.00



## COLLECTION NO. 30

24pt body, 12 & 24 sets

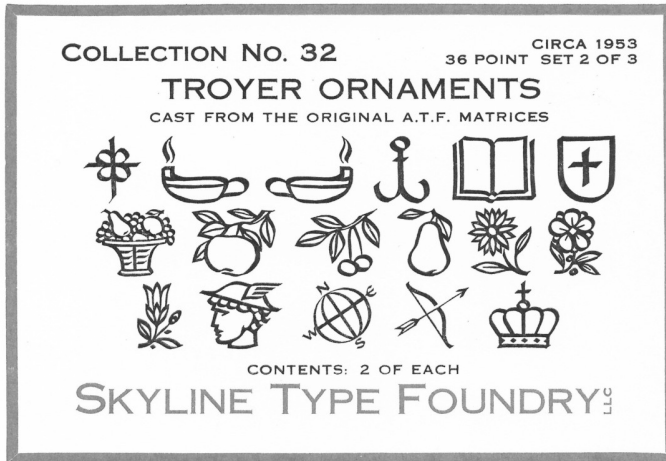
**Price:** \$25.00



## COLLECTION NO. 31 - TROYER ORNAMENTS

Circa 1953  
36 point  
Cast from the original ATF Matrices  
Set 1 of 3

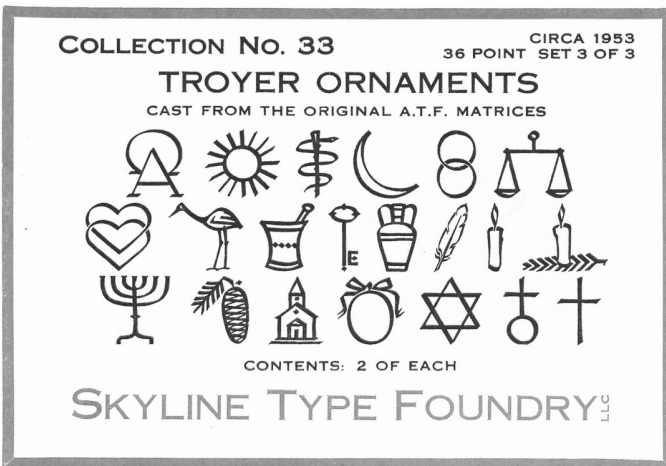
**Price:** \$65.00



## COLLECTION NO. 32 - TROYER ORNAMENTS

Circa 1953  
36 point  
Cast from the original ATF Matrices  
Set 2 of 3

**Price:** \$65.00



## COLLECTION NO. 33 - TROYER ORNAMENTS

Circa 1953  
36 point  
Cast from the original ATF Matrices  
Set 1 of 3  
Contents: 2 of each

**Price:** \$65.00

## COLLECTION NO. 34 - ALPHA-BLOX

Alpha-Blox are back! Our first casting (2016) was a big hit and has been sold out for quite some time. The current owner of the original American Type Founders matrices once again entrusted them to us, and we have produced a second casting of 90 fonts. Some of the tech on this project: depth-of-drive on these matrices is 0.0968", which was proprietary to ATF. That depth plus the fixed body dimension of the mold must equal 0.9186" for the type to be standard height. Our Thompson casters are not engineered for this drive; on the first casting our only option was to cast the type over-height and mill the foot of each piece, which we did. (Very tedious and laborious.) This time we went to the extraordinary

COLLECTION No. 34  
BOX 1 OF 2

CIRCA 1944  
36 POINT

ALPHA-BLOX LINEAR



SKYLINE TYPE FOUNDRY

COLLECTION No. 34  
BOX 2 OF 2

CIRCA 1944  
36 POINT

ALPHA-BLOX REVERSE



SKYLINE TYPE FOUNDRY

measure of having one of our spare molds irreversibly altered by a machine shop so that it matched the ATF drive. This was successful and the type was produced to standard height, no milling required. Alpha-Blox were designed with a partially kerned beard on all four sides, to be automatically trimmed flush after casting by ATF's Barth casters. Thompson casters will trim the top and bottom edges of the type as it is ejected from the mold, but not the sides. Thus manual dressing was required left and right. This was done on every one of the types—of which there were 20,784 (that's 1,107 lbs). Yes, we are dedicated to our craft.

The second photo above is a proof of all the Alpha-Blox elements printed together in two-color combination. The third is the American Type Founders specimen sheet from 1944. (Elements are displayed individually at the bottom of that specimen, but please note that the quantities shown per font are not applicable to the Skyline set.)

**Price:** \$195.00



SKYLINE TYPE FOUNDRY

**COLLECTION NO. 35 - GRANJON  
ARABESQUES, 18PT**

At present we are unable to restock this Collection due to failure of the casting matrix for one of the elements.

**Price:** \$35.00



## COLLECTION No. 36

### PRIMULA ORNAMENTS

CIRCA 1950



CONTENTS: 280 PIECES

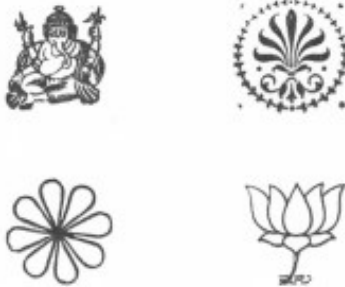
SKYLINE TYPE FOUNDRY<sup>LTC</sup>

## COLLECTION NO. 36

The Primula Ornaments were originated by Typefoundry Amsterdam, circa 1950.

**Price:** \$35.00

## COLLECTION No. 37



CONTENTS: 42 PIECES

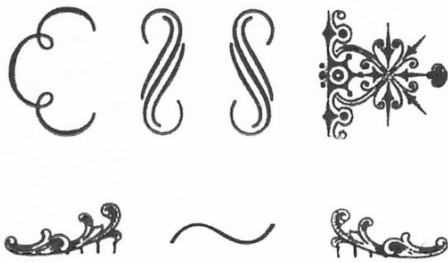
SKYLINE TYPE FOUNDRY<sup>5</sup>

## COLLECTION NO. 37

These four elements are from the substantial collection of matrices we acquired from India. The first is a representation of Ganesha, the Hindu deity. (From Wiki: "*Although Ganesha has many attributes, he is readily identified by his elephant head. He is widely revered, more specifically, as the remover of obstacles and thought to bring good luck.*") The arabesque has been spotted in antique American type specimens, and the hippie flower and lotus blossom are familiar symbols in the culture of India.

**Price:** \$30.00

## COLLECTION NO. 38



CONTENTS: 80 PIECES

SKYLINE TYPE FOUNDRY<sup>LLC</sup>

## COLLECTION NO. 38

Price: \$30.00

## COLLECTION No. 39



CONTENTS: 80 PIECES

SKYLINE TYPE FOUNDRY<sup>LLC</sup>

## COLLECTION NO. 39

Pieces are cast on 30pt or 36pt body.

Price: \$30.00

## COLLECTION No. 40



CONTENTS: 69 PIECES

SKYLINE TYPE FOUNDRY<sub>5</sub>

## COLLECTION NO. 40

Cast on 24pt body, various sets.

**Price:** \$25.00

## COLLECTION No. 41



CONTENTS: 58 PIECES

SKYLINE TYPE FOUNDRY<sub>5</sub>

## COLLECTION NO. 41

24pt body, various widths.

**Price:** \$30.00

## COLLECTION NO. 42

**Price:** \$30.00

## COLLECTION No. 42

PRINTED IN U.S.A. PRINTED IN U.S.A. PRINTED IN U.S.A. PRINTED IN CANADA PRINTED IN U.S.A. PRINTED IN U.S.A.

PRINTED IN U. S. A.

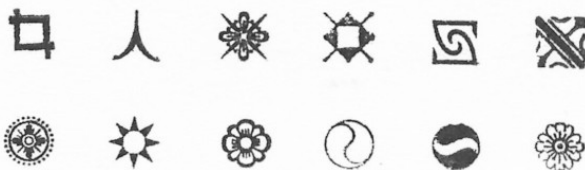


CONTENTS: 147 PIECES

SKYLINE TYPE FOUNDRY<sup>LTC</sup>

## COLLECTION No. 43

CONTENTS: 216 PIECES



SKYLINE TYPE FOUNDRY<sup>5</sup>

### COLLECTION NO. 43

A set of twelve different ornaments, all cast on 12pt em-body, from a bunch of old foundry matrices recently obtained from India. The source of these designs is not known but some of the other matrices in this fortuitous acquisition were the Primula Ornaments originating with Typefoundry Amsterdam. These elements are quite possibly from there also, or English Monotype. The Indian-made mats are rather irregular but we're making the best of them.

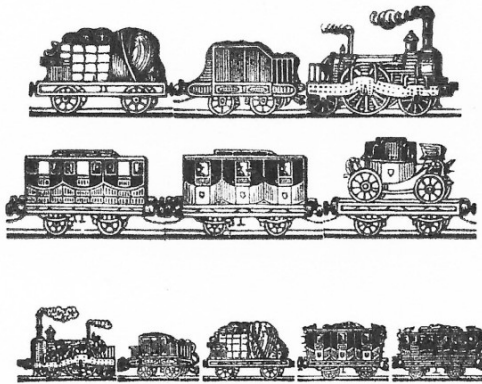
**Price:** \$25.00

### COLLECTION NO. 44 — THE FIGGINS TRAINS

30 and 24pt body

**Price:** \$35.00

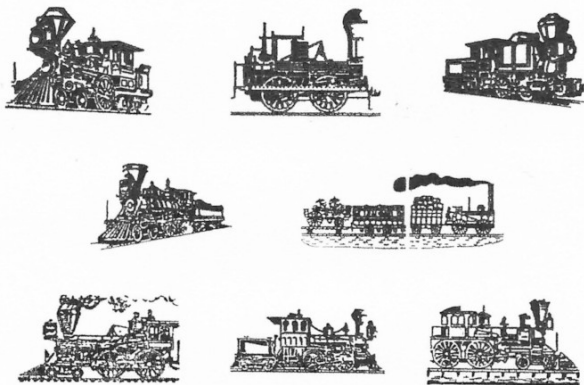
## COLLECTION NO. 44



CONTENTS: 36 PIECES

SKYLINE TYPE FOUNDRY<sub>5</sub>

## COLLECTION NO. 45



CONTENTS: 27 PIECES

SKYLINE TYPE FOUNDRY<sub>5</sub>

## COLLECTION NO. 45

24 or 30pt body, various widths.

**Price:** \$30.00

## COLLECTION No. 46

CONTENTS: 216 PIECES



SKYLINE TYPE FOUNDRY

## COLLECTION NO. 46

All elements are on 12 point em-body.

**Price:** \$25.00

## COLLECTION No. 47

CONTENTS: 216 PIECES



SKYLINE TYPE FOUNDRY

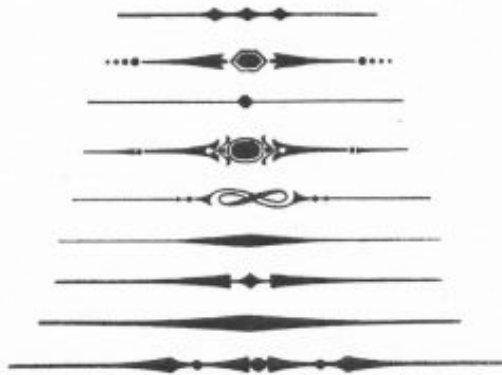
## COLLECTION NO. 47

12 Point

216 Pieces

**Price:** \$25.00

## COLLECTION No. 48



CONTENTS 5 OF EACH

SKYLINE TYPE FOUNDRY

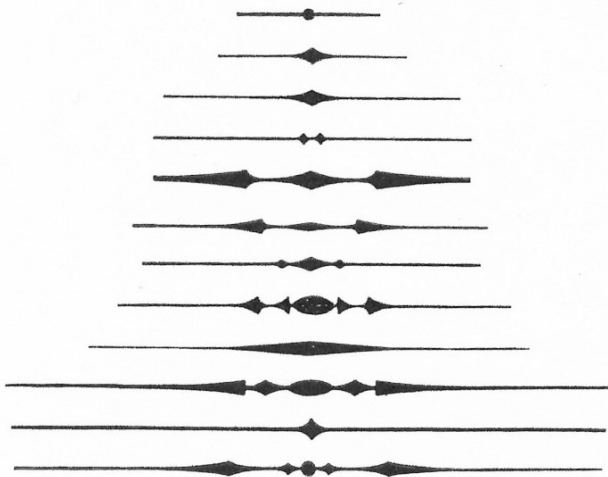
## COLLECTION NO. 48

Linecast and trimmed to lengths ranging from 7 to 13 picas.

These ornamental dashes from the golden age of letterpress will really jazz up your printing!

**Price:** \$35.00

## COLLECTION No. 49



CONTENTS 5 OF EACH

## COLLECTION NO. 49

Linecast and trimmed to lengths ranging from 4 to 14 picas.

These ornamental dashes from the golden age of letterpress will really jazz up your printing!

**Price:** \$35.00

## COLLECTION No. 53



CONTENTS: 38 PIECES

SKYLINE TYPE FOUNDRY LLC

## COLLECTION NO. 53

A curious assembly of antique typecuts.  
Contains two of each; body sizes are 24, 36 or 48.

**Price:** \$45.00

## COLLECTION No. 54

CONTENTS  
36 PIECES



SKYLINE TYPE FOUNDRY

## COLLECTION NO. 54

A curious assembly of antique typecuts with a Classical theme.  
Contains two of each; body sizes are 24, 36, 48 or 60.

**Price:** \$35.00

## COLLECTION No. 50

A SALUTE TO *Starshaped Press*



CONTENTS: 59 PIECES

SKYLINE TYPE FOUNDRY

## COLLECTION NO. 50

Skyline's 50th (Collection, that is) salutes the 20th (anniversary, that is) of Chicago's letterpress printer extraordinaire Jen Farrell and her Starshaped Press. Congratulations Jen!

**Price:** \$30.00



COLLECTION No. 51  
SCISSORCUT ORNAMENTS



CONTENTS: 60 PIECES

SKYLINE TYPE FOUNDRY

## COLLECTION NO. 51

All elements are on 24pt body.

*Scherenschnitte*, or scissorcuts, is an art form that arose in Switzerland in the 16th century. It consists of cutting out designs, sometimes very elaborate, in paper. Some time in the first half of the 20th century Lanston Monotype designed a series of 12 little ornaments—natural flora and fauna—in the scissorcut style, and made matrices available to those who had typesetting machines. Over the years Skyline has been fortunate enough to accumulate 11 of these, but that last one was ever elusive. When Quaker City Type was liquidated recently we were able to acquire a few additions to our matrix vault, including (hallelujah!) the one missing mat. We wasted no time in casting this full set for your printing pleasure.

Interestingly, Lanston's creation of these designs coincided roughly with Germany's release of the type face Neuland, which is also very much in the *scherschnitte* style. These ornaments would be very complementary to Neuland.

**August, 2022** Received the following note from fine printer and our good customer Hans van Eijk in Netherlands:

"... these are actually a series of ornaments designed in 1926 by André van der Vossen for Joh. Enschedé [Type Foundry] in Haarlem, as part of his *Houtsneeletter* (Woodcut Letter). The original designs all face right, but the U.S. copyist reversed them."

The second and third photos above are from a specimen brochure of the *Houtsneeletter* type face (undated, but Hans estimates 1960s). Some of the elements shown do not appear in the Monotype set, and vice versa.

**Price:** \$30.00



## COLLECTION NO. 52

A curious assembly of antique animal typecuts. Contains two of each, except the Fish, of which there is seven.

The Bull is cast on 54pt body, all others are 36 or 48.

What we want to know is how that Bear supports the end of his hammock in thin air! (The title of his book, in case you can't quite read it, is "Bear Stories").

**Price:** \$45.00



## COLLECTION NO. 55

A curious assortment of miscellaneous antique typecuts.

Contains two of each; body sizes are 24, 36, 42 or 48.

That thing at the lower left? It's not a Christmas tree, but a beehive—the technical term for which is a "skep".

**Price:** \$35.00

## COLLECTION NO. 56

A curious assortment of miscellaneous antique typecuts.

Contains two of each; body sizes are 24, 36, or 48.

**Price:** \$35.00

## COLLECTION No. 56

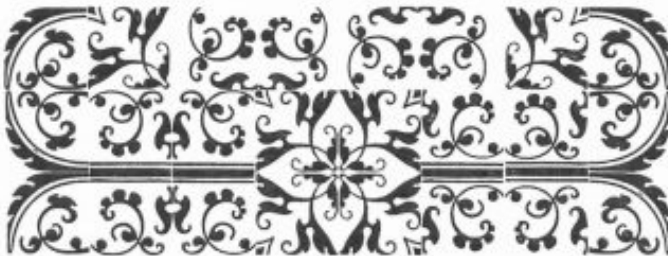


CONTENTS 38 PIECES

SKYLINE TYPE FOUNDRY<sub>FF</sub>

## COLLECTION No. 57

GRANJON ARABESQUES 24 POINT



CONTENTS 108 PIECES

SKYLINE TYPE FOUNDRY<sub>FF</sub>

## COLLECTION NO. 57 - GRANJON ARABESQUES, 24PT

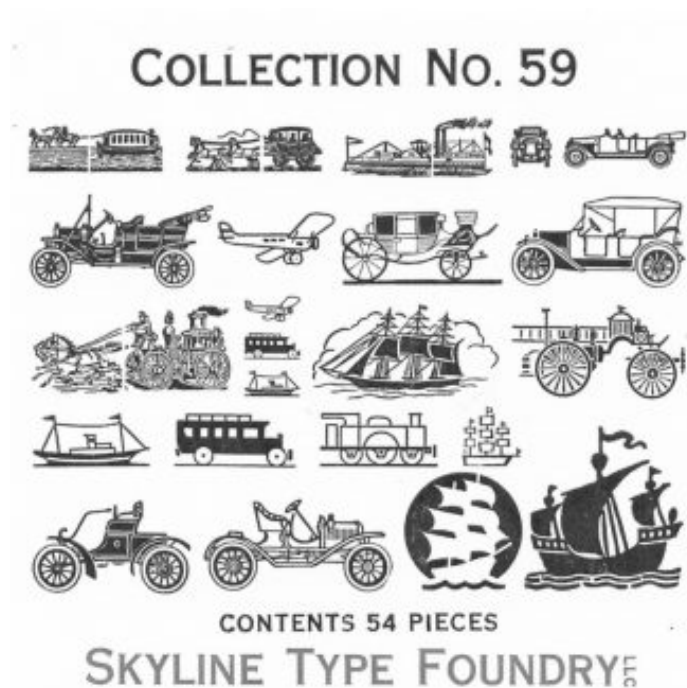
Price: \$30.00



## COLLECTION NO. 58 - GRANJON ARABESQUES, 36PT

NOTE: The label specifies 93 pieces in this Collection, but there are in fact 91.

**Price:** \$45.00



## COLLECTION NO. 59

A curious assortment of miscellaneous antique typecuts.

Contains two of each; body sizes are 18, 24, 30, 36, or 48.

On four of the items in this Collection, the image is cast on two bodies by two different matrices. These are the Canal Boat, Coach & Four, and Steamboat in the first row, and Fire Wagon in the third. The types can be hand-dressed (drawn along a flat file) to get a closer fit if desired.

**Price:** \$35.00

## COLLECTION NO. 60 - BAUMANN QUAD ORNAMENTS

All are cast on 36-point em body.

This is a collaborative project between the New Mexico History Museum, Skyline Type Foundry, and Swamp Press. Here is the text of an insert furnished with the Collection, as hand-set and letterpress-printed by Tom Leech at the NMHM's Press at the Palace of the Governors:

Gustave Baumann (1881-1971) was a great 20<sup>th</sup> century artist and craftsman. Born in Germany and

## COLLECTION NO. 60

### GUSTAVE BAUMANN'S QUAD ORNAMENTS



CONTENTS 5 OF EACH

SKYLINE TYPE FOUNDRY

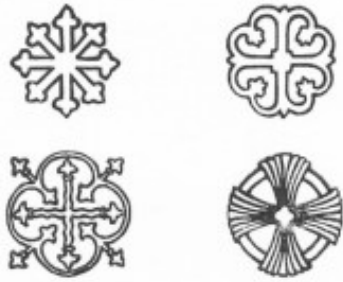
raised in Chicago, at sixteen he apprenticed in an engraving house, and soon established himself as a noted graphic designer. During his Chicago years he was friends with many of the country's most accomplished graphic artists, among them was Osgood (Oz) Cooper, from whom Baumann undoubtedly learned much about lettering. But Baumann's commercial art career didn't last long; in 1910 he relocated to the art colony of Nashville, Indiana, where he began the pursuit of art, expressed mainly through the medium of color woodcut, the artform he mastered and for which he is best known.

Baumann settled in Santa Fe in 1918, where he passed the rest of his days producing a huge body of work. Found in the voluminous archive of his correspondence, ephemera, drawings, and blocks donated to the New Mexico History Museum was a page of "hieroglyphic doodles" titled "Baumann Quad Ornaments." It also bore many numerical notations clearly indicating typographic calculations. Although undated, these were likely done in the 1920s. Many of the designs relate to Baumann's study of Southwest Indian pottery, and he carved dozens into inch-square woodblocks. Proofs were pulled from those blocks at the Press at the Palace of the Governors and sent to Ed Rayher at his Swamp Press in Massachusetts. Ed engraved the brass matrices from which these ornaments were cast. Sky Shipley at Skyline Type Foundry in Arizona produced the first casting in December 2020. Almost a century has gone by from when Baumann inked his ideas on paper. May these characters be a reminder of Gustave Baumann's remarkable legacy.

**Price:** \$30.00

## COLLECTION NO. 61

### MURAL ORNAMENTS



CONTENTS 42 PIECES

SKYLINE TYPE FOUNDRY

## COLLECTION NO. 62



CONTENTS 72 PIECES

SKYLINE  
TYPE FOUNDRY

## COLLECTION NO. 61 — MURAL ORNAMENTS

Font contains at 10 or more of each.  
All are on 36pt em-body.

These historic ornaments are 4 of a set of 14 called Mural Ornaments presented by American Type Founders in their 1898 catalog.

**Price:** \$30.00

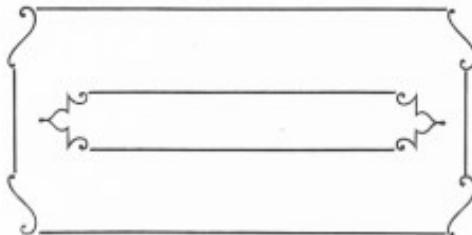
## COLLECTION NO. 62

Font contains 12 of each element.  
All are on 12 x 36pt body.

**Price:** \$25.00

COLLECTION No. 63

CONTENTS 56 PIECES



RULE LENGTHS: 5, 10, 15, 20, 25 PICAS

SKYLINE TYPE FOUNDRY

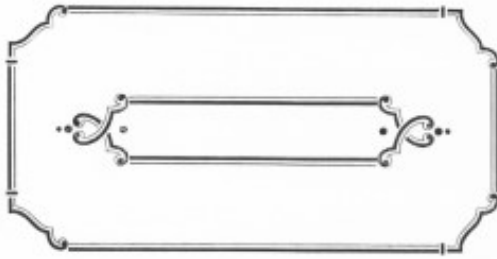
## COLLECTION NO. 63

A kit for composing ornamental frames. There are four different typecast ornamental elements (two mirror-image pairs, with 6 or 7 pieces of each) and linecast rule segments of matching weight in lengths ranging from 5 to 25 picas (6 pieces of each). This is a versatile outfit and could certainly be augmented by other decorative elements in your shop.

**Price:** \$30.00

### COLLECTION No. 64

CONTENTS 52 PIECES



RULE LENGTHS: 5, 10, 15, 20, 25 PICAS

SKYLINE TYPE FOUNDRY LLC

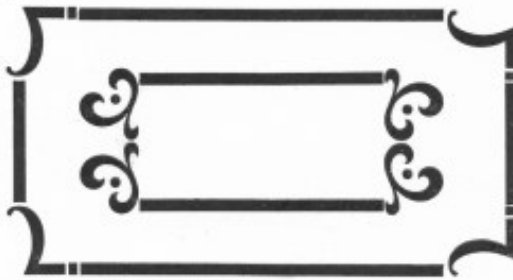
### COLLECTION NO. 64

A kit for composing ornamental frames. There are four different typecast ornamental elements (two mirror-image pairs, with 5 or 6 pieces of each) and linecast rule segments of matching weight in lengths ranging from 5 to 25 picas (6 pieces of each). This is a versatile outfit and could certainly be augmented by other decorative elements in your shop.

**Price:** \$30.00

### COLLECTION No. 65

CONTENTS 50 PIECES



RULE LENGTHS: 5, 10, 15, 20, 25 PICAS

SKYLINE TYPE FOUNDRY LLC

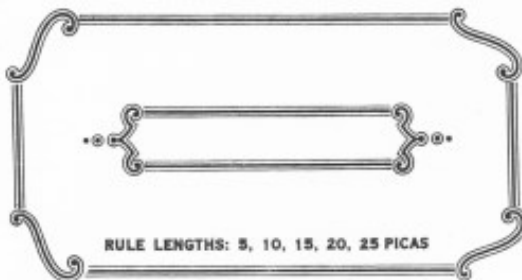
### COLLECTION NO. 65

A kit for composing ornamental frames. There are four different typecast ornamental elements (two mirror-image pairs, with 5 or 6 pieces of each) and linecast rule segments of matching weight in lengths ranging from 5 to 25 picas (6 pieces of each). This is a versatile outfit and could certainly be augmented by other decorative elements in your shop.

**Price:** \$30.00

### COLLECTION No. 66

CONTENTS 52 PIECES



RULE LENGTHS: 5, 10, 15, 20, 25 PICAS

SKYLINE TYPE FOUNDRY LLC

### COLLECTION NO. 66

A kit for composing ornamental frames. There are four different typecast ornamental elements (two mirror-image pairs, with 5 or 6 pieces of each) and linecast rule segments of matching weight in lengths ranging from 5 to 25 picas (6 pieces of each). This is a versatile outfit and could certainly be augmented by other decorative elements in your shop.

**Price:** \$30.00

## COLLECTION No. 67

CONTENTS 50 PIECES



RULE LENGTHS: 10, 15, 20, 25 PICAS

SKYLINE TYPE FOUNDRY

## COLLECTION NO. 67

A kit for composing ornamental frames. There are four different typecast ornamental elements (two mirror-image pairs, with 5 or 6 pieces of each) and linecast rule segments of matching weight. Two of the decorative elements are made to go right inline with the rule, not just at the ends or otherwise adjacent. There is a selection of rule cut to such lengths that a frame can be composed with straight rule on top and bottom (10 to 25 picas), or with one centered inline swash, or the full "mustache".

**Price:** \$30.00

## COLLECTION No. 68

CONTENTS 128 PIECES

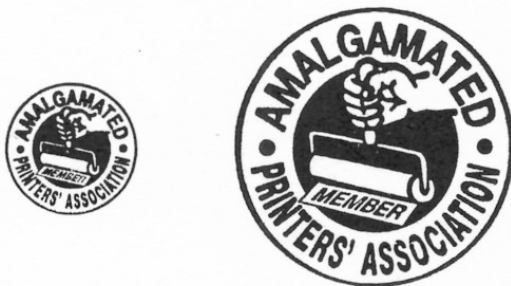


## COLLECTION NO. 68

Elements are cast on bodies ranging from 12 to 36 points in size.

**Price:** \$30.00

## COLLECTION No. 69



SKYLINE TYPE FOUNDRY

## COLLECTION NO. 69 - APA LOGO

Contains 2 pieces on 36 point em body and one on 72 point.

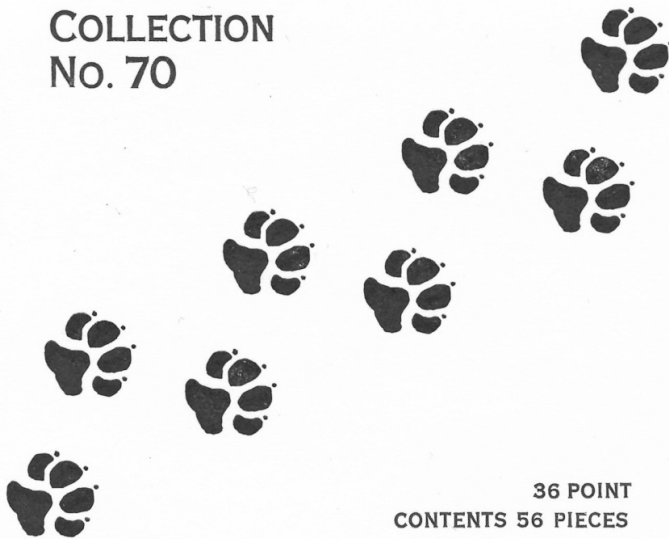
You must be an APA member or on the waiting list to purchase.

Thanks to APA members Rich Hopkins and Dan Jones who cast the 72 point logos. The 36 point logo was cast here at Skyline.

**Price:** \$1.00



COLLECTION  
No. 70



36 POINT  
CONTENTS 56 PIECES

SKYLINE TYPE FOUNDRY

**COLLECTION NO. 70 - PAWPRINT**

**Price:** \$35.00