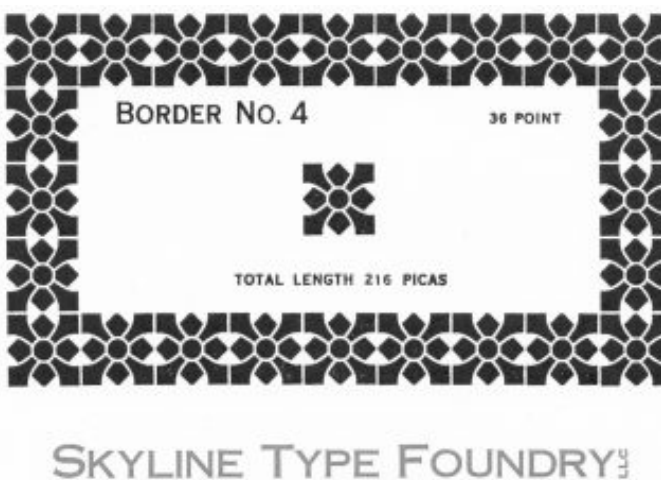


DECORATIVE BORDERS



BORDER NO. 1

Price: \$25.00



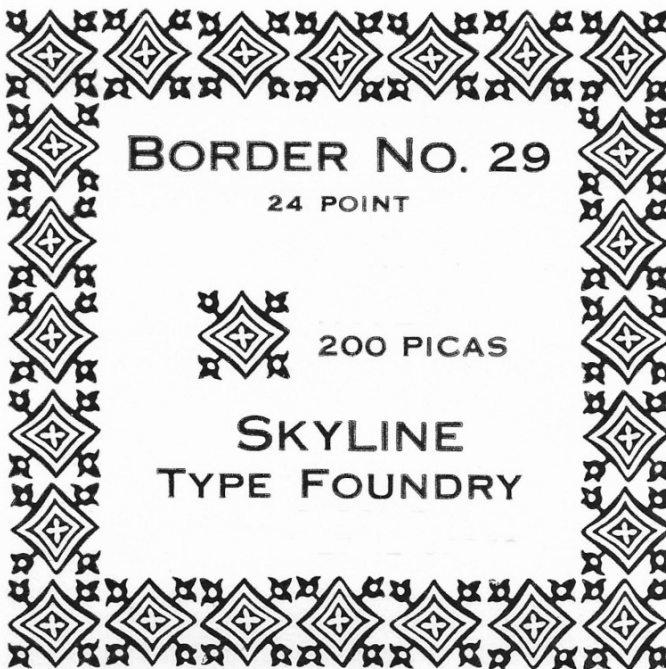
BORDER NO. 4

36 Point
Total Length 216 Picas

Price: \$45.00

BORDER NO. 27

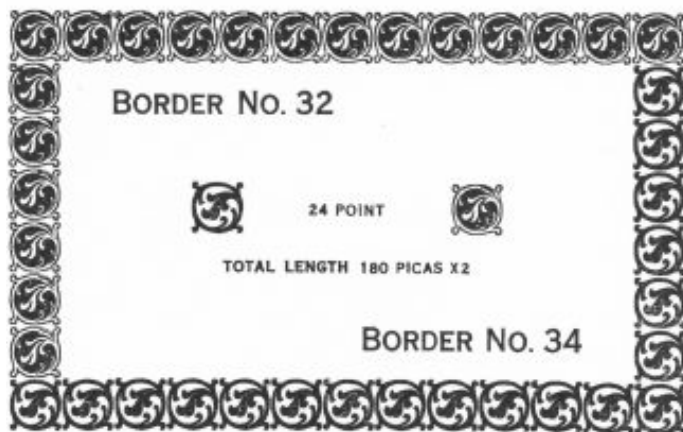
Price: \$30.00



BORDER NO. 29

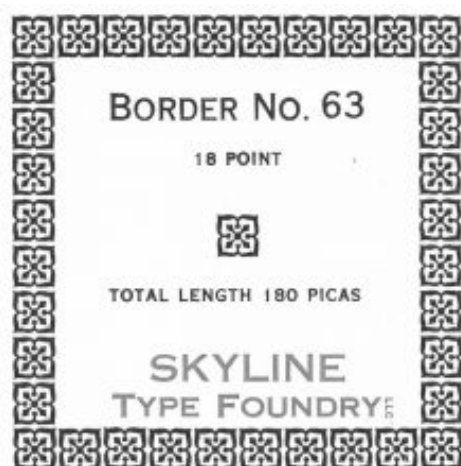
24 Point
Total Length 200 Picas

Price: \$30.00



BORDERS NO. 32+34

Price: \$60.00



BORDER NO. 63

18 Point
Total Length 180 Picas

Price: \$30.00



BORDER NO. 33

Price: \$30.00



BORDER NO. 65

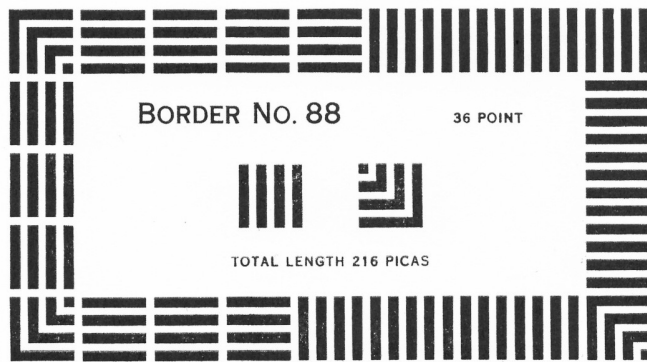
Price: \$30.00

SKYLINE TYPE FOUNDRY₅



BORDER NO. 88 - 18PT.

Price: \$30.00



BORDER NO. 88

36 POINT

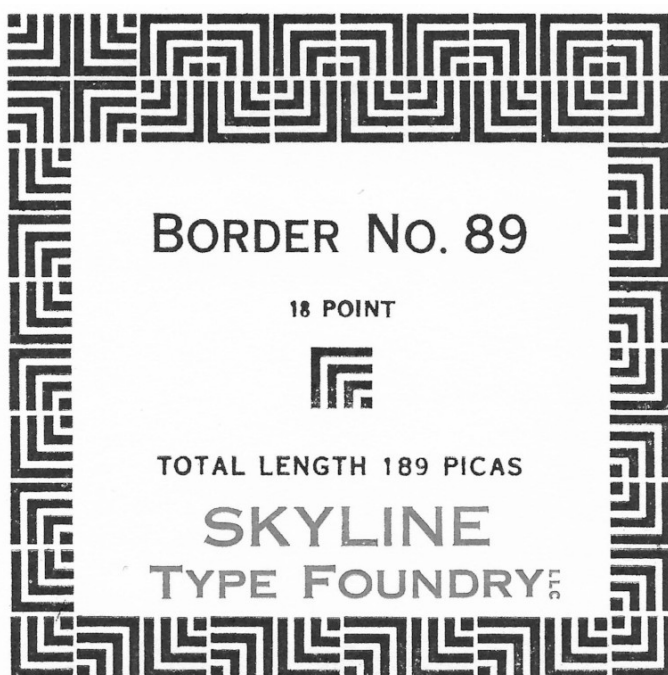


TOTAL LENGTH 216 PICAS

SKYLINE TYPE FOUNDRY^{LLC}

BORDER NO. 88 - 36PT.

Price: \$45.00



BORDER NO. 89

18 POINT



TOTAL LENGTH 189 PICAS

SKYLINE
TYPE FOUNDRY^{LLC}

BORDER NO. 89

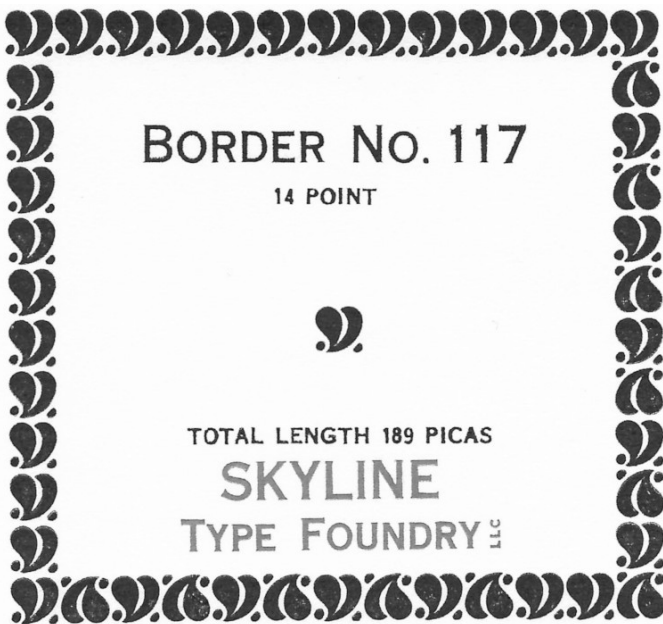
18 Point

Total Length 189 Picas

Price: \$30.00

BORDER NO. 99 - 18PT

Price: \$30.00



BORDER NO. 117

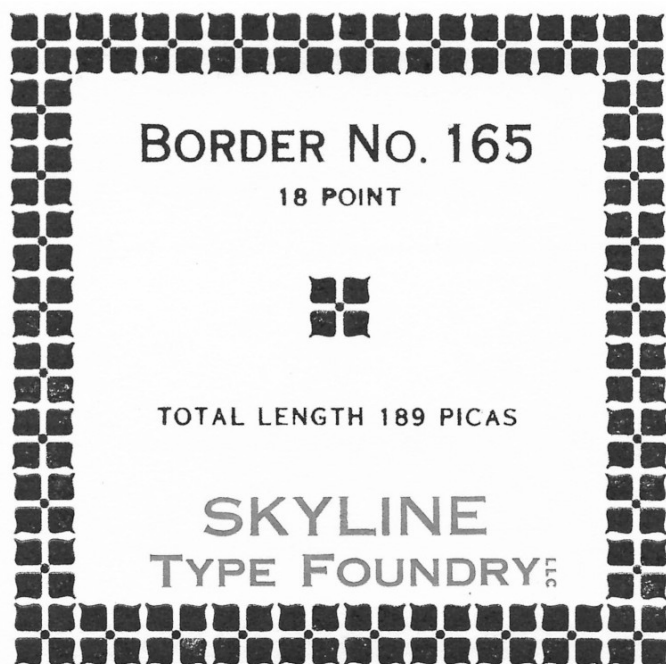
14 Point
Total Length 189 Picas

Price: \$30.00



BORDER NO. 121

Price: \$30.00



BORDER NO. 165

Price: \$30.00



BORDER NO. 179

Price: \$30.00



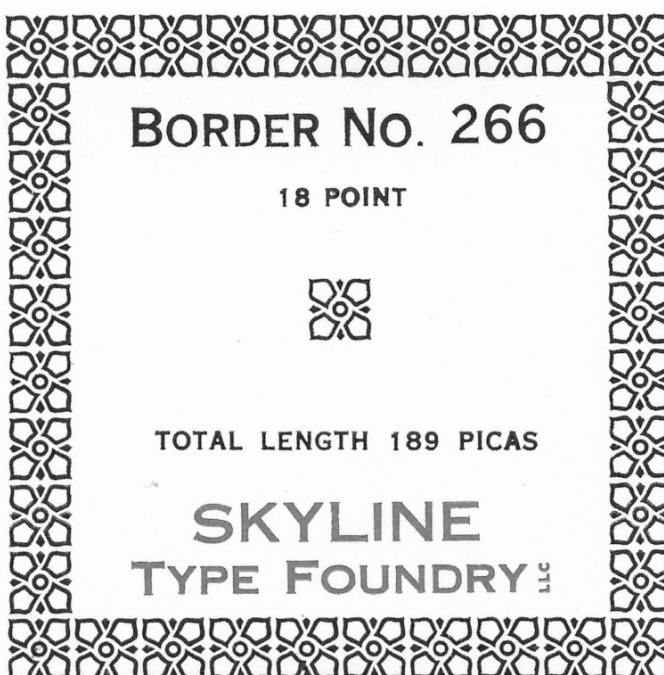
BORDER NO. 241

Price: \$30.00



BORDER NO. 245

Price: \$30.00



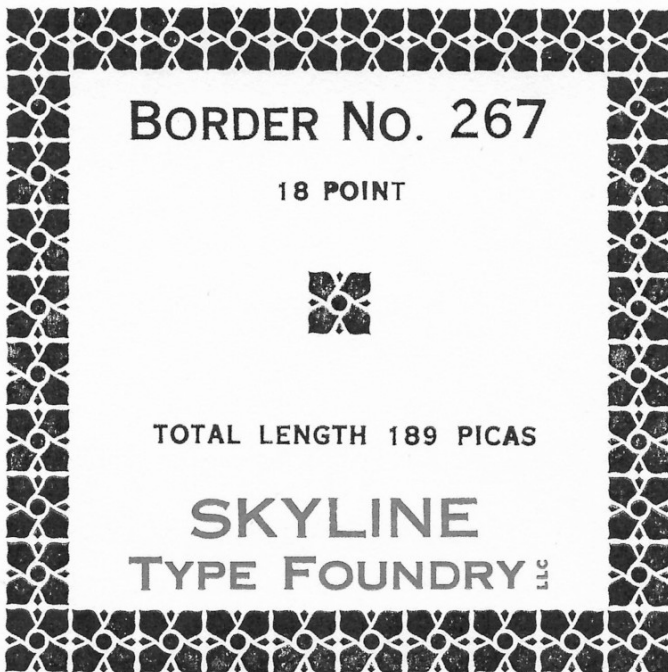
BORDER NO. 266

Price: \$30.00



BORDER NO. 251

Price: \$30.00



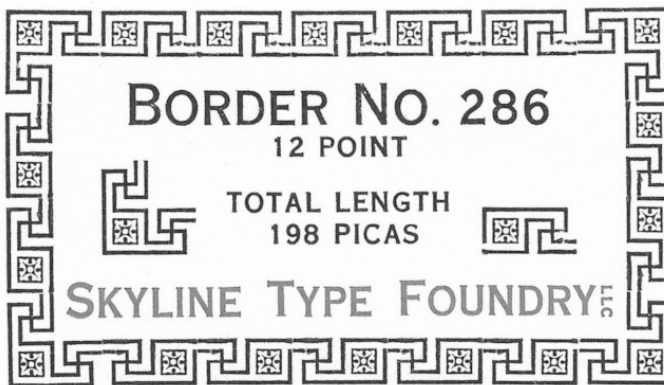
BORDER NO. 267

Price: \$30.00



BORDER NO. 273

Price: \$30.00



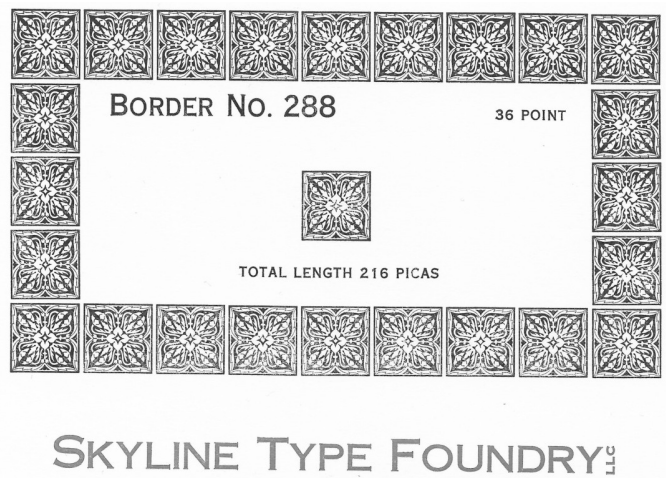
BORDER NO. 286

NOTE: The matrix for the runner element has a slight flaw. This cannot be repaired.

Price: \$25.00

BORDER NO. 290

Price: \$30.00



BORDER NO. 288

Price: \$45.00

BORDER NO. 313

This is Monotype's delightful six-element ribbon border.
It's very versatile, you can have it wander all over the page if you like!

Price: \$30.00



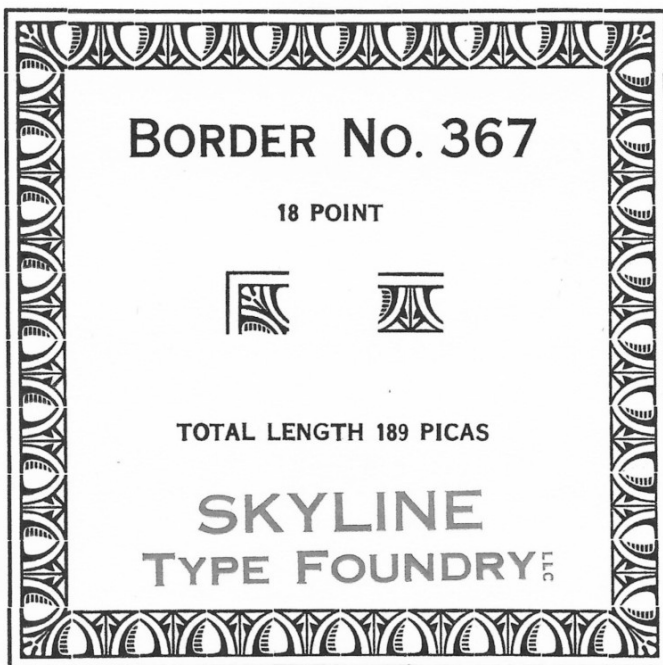
BORDER NO. 324

Price: \$25.00

BORDER NO. 367

The famous "Egg & Dart" design, dating back to the Middle Ages.

Price: \$30.00



BORDER NO. 417

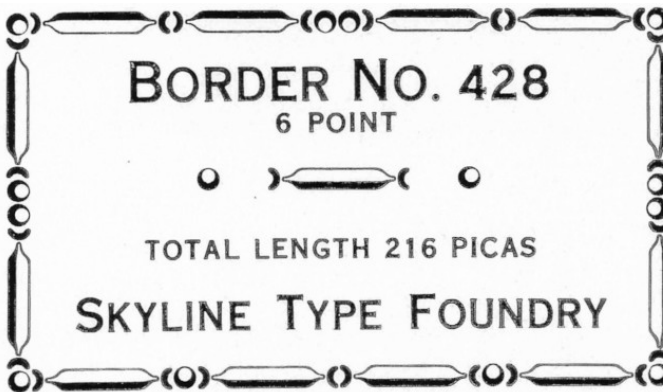
NOTE: Border No. 417 was previously sold as Border No. 422, prior to our current standardized Monotype designation system.

Price: \$30.00



BORDER NO. 423

Price: \$30.00



BORDER NO. 428

Price: \$20.00



BORDER NO. 474

Price: \$25.00



BORDER NO. 476

Price: \$35.00



BORDER NO. 497

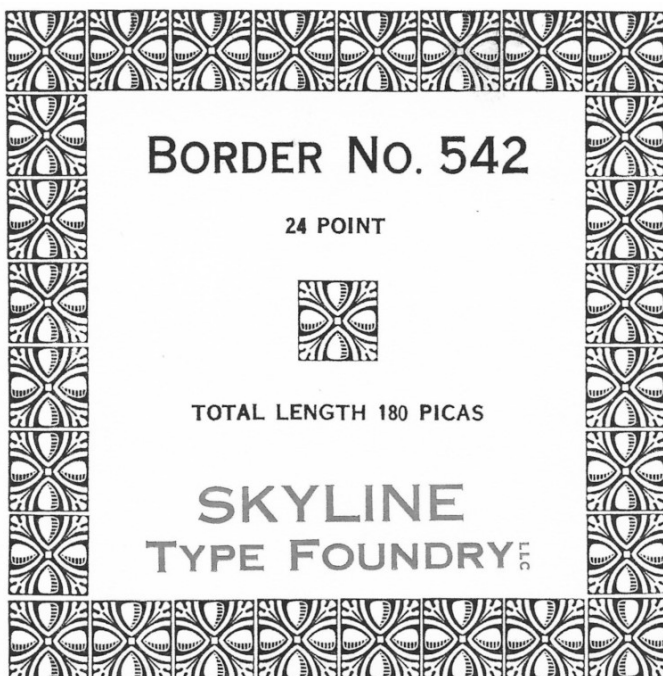
Price: \$25.00



BORDER NO. 540

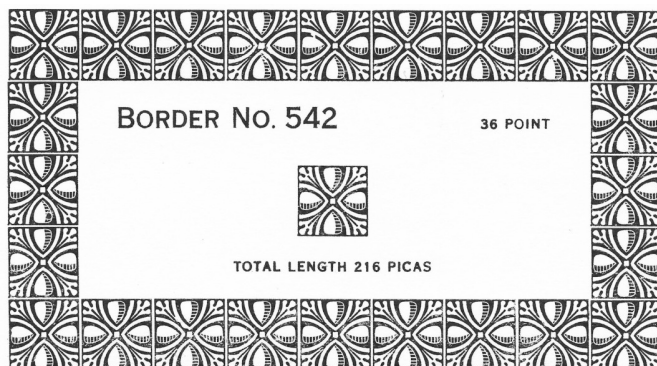
24 Point
Total Length 180 Picas

Price: \$30.00



BORDER NO. 542 - 24PT

Price: \$30.00



BORDER NO. 542 - 36PT

Price: \$45.00

SKYLINE TYPE FOUNDRY^{LLC}



BORDER NO. 548

Price: \$25.00



BORDER NO. 601

Price: \$30.00



BORDER NO. 643

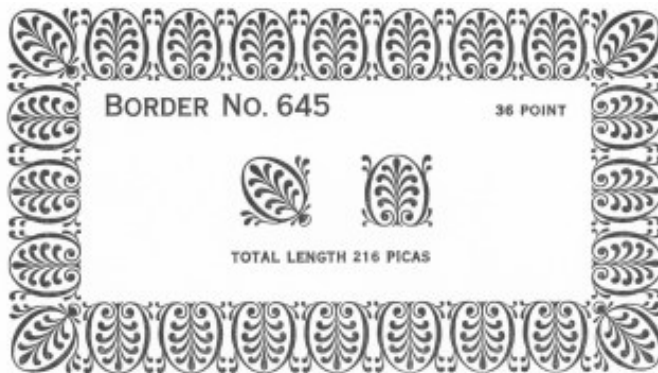
Price: \$45.00



BORDER NO. 675

A two-element grapevine design in 18pt.

Price: \$30.00



BORDER NO. 645

Price: \$45.00

SKYLINE TYPE FOUNDRY LLC



BORDER NO. 651 - 18PT

Price: \$30.00



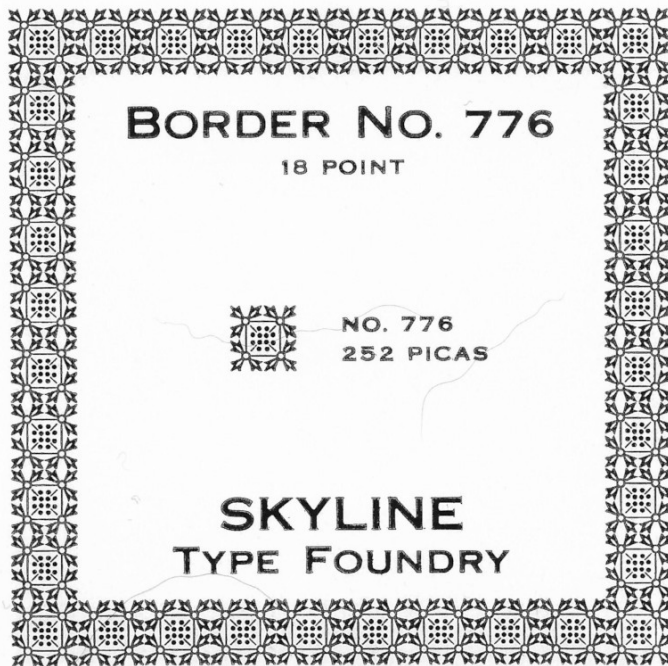
BORDER NO. 651 - 12PT

Price: \$25.00



BORDER NO. 770

Price: \$25.00



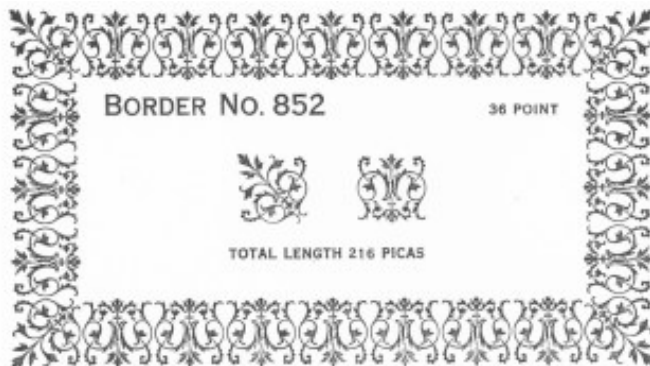
BORDER NO. 776

Price: \$30.00



BORDER NO. 875

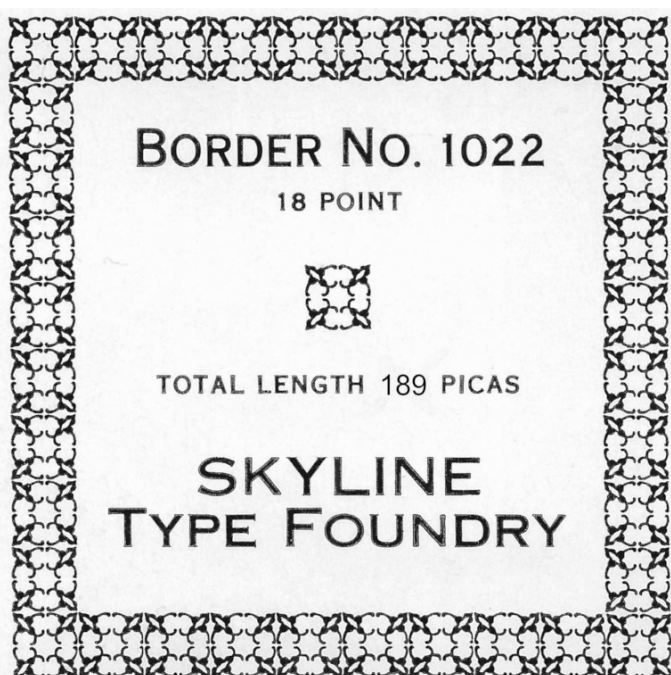
Price: \$30.00



BORDER NO. 852

Price: \$45.00

SKYLINE TYPE FOUNDRY^{LLC}



BORDER NO. 1022

Price: \$30.00

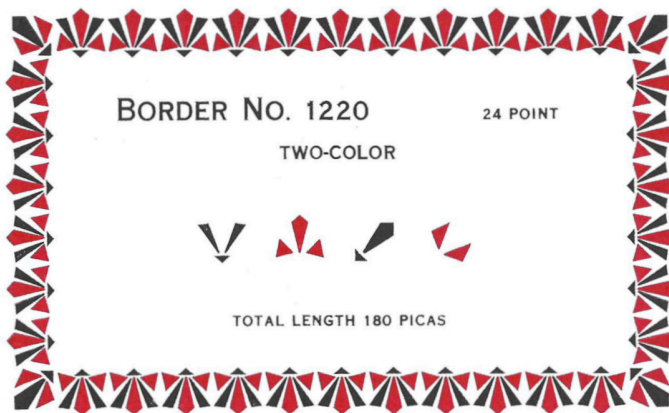
BORDER NO. 1022
18 POINT
TOTAL LENGTH 189 PICAS
SKYLINE
TYPE FOUNDRY



BORDER NO. 1054

Price: \$20.00

BORDER NO. 1054
6 POINT
TOTAL LENGTH 216 PICAS
SKYLINE TYPE FOUNDRY



BORDER NO. 1220 (TWO COLOR)

Price: \$50.00

SKYLINE TYPE FOUNDRY LLC



BORDER NO. 1222

24 Point
Total Length 180 Picas

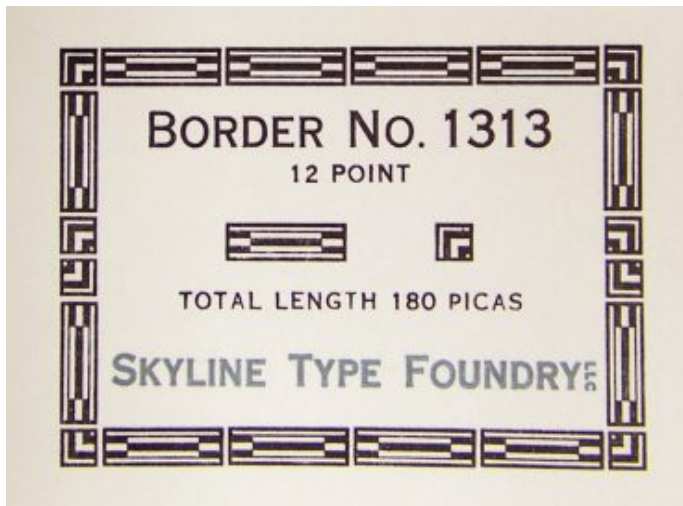
Price: \$30.00



BORDER NO. 1259

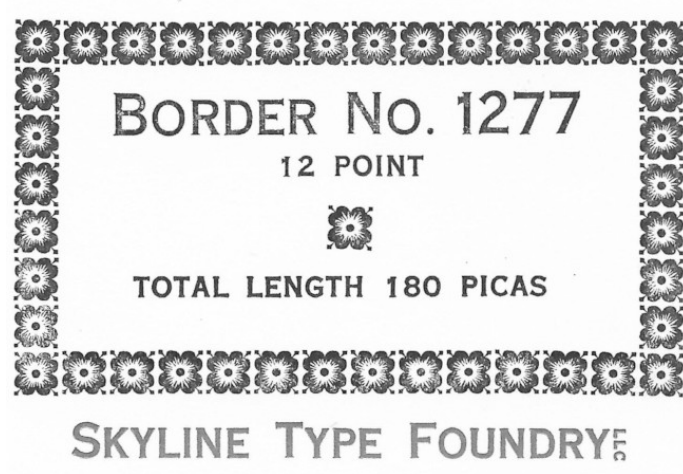
18 Point
Total Length 189 Picas

Price: \$30.00



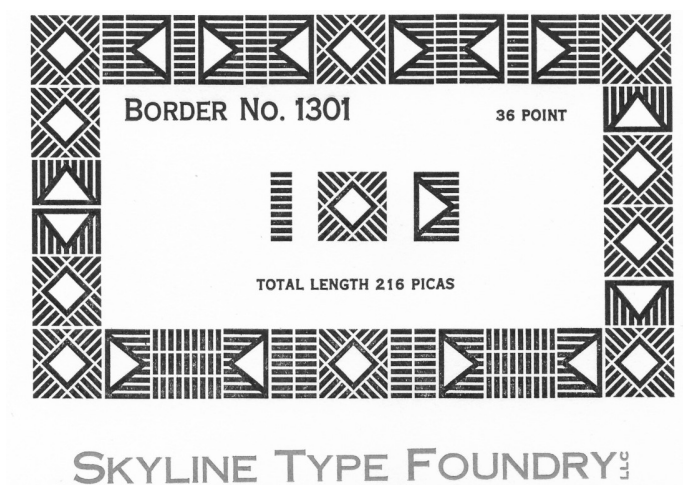
BORDER NO. 1313

Price: \$25.00



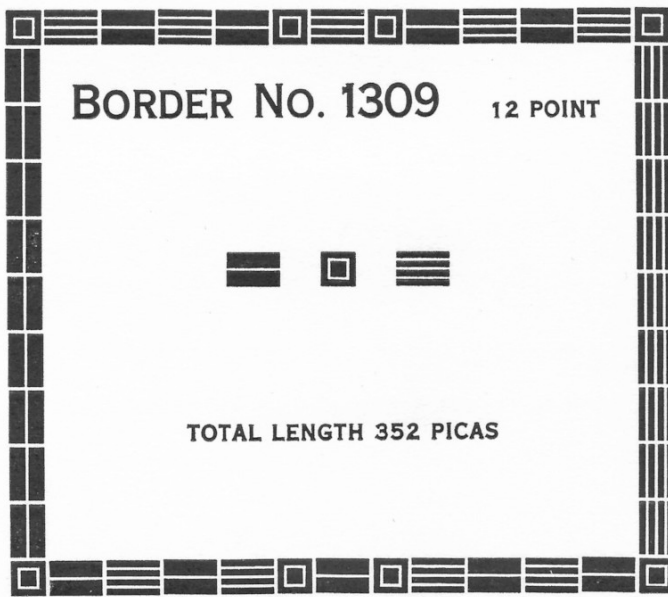
BORDER NO. 1277

Price: \$25.00



BORDER NO. 1301

Price: \$45.00



BORDER NO. 1309

This design, cast from Monotype matrices, is actually shown as two separate borders in the (pre-WWII) specimen book—each of the two runners combining with the same corner. The runners are dimensionally the same and complementary in design, so it's self-evident to use them together. We have provided a full quantity of each (176 picas) so this set is in effect a double Border.

Price: \$45.00



BORDER NO. 1316

18 Point
Total Length 189 Picas

Price: \$30.00



BORDER NO. 1329 - 9PT

Nine point? Why that odd size? It's because the runner element is cast vertically, on 18 point em-body. Composed sideways, it is effectively then a 9 point border. The corner is on 18 point em-body.

This size also facilitates composition with this same border in the larger 18pt size (see below).

Price: \$25.00



BORDER NO. 1329 - 18PT

The classic laurel-wreath border.

Price: \$30.00

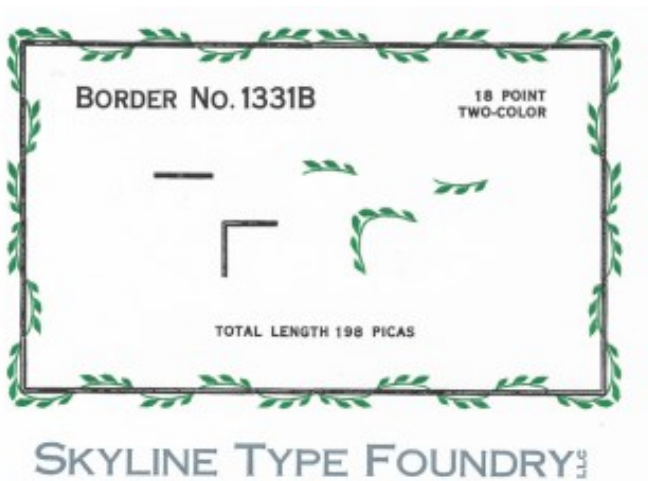


BORDER NO. 1331A

18 Point

Total Length 181 Picas

Price: \$30.00



BORDER NO. 1331B (TWO COLOR)

Price: \$50.00



BORDER NO. 1415

18 Point
Total Length 189 Picas

Price: \$30.00



BORDER NO. 1417

Price: \$30.00



BORDER NO. 1421

Price: \$30.00



BORDER NO. 1423

Price: \$30.00



BORDER NO. 1424

Price: \$30.00



BORDER NO. 1425

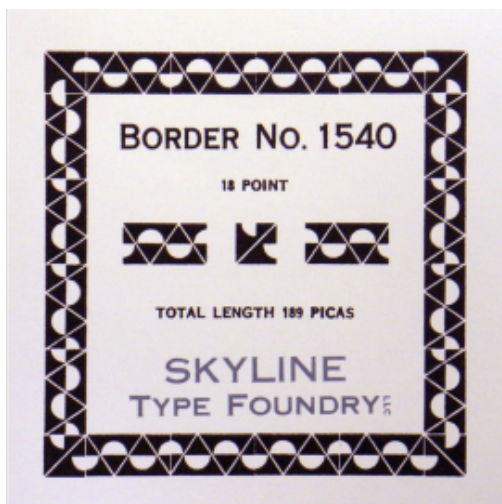
14 Point
Total Length 179 Picas

Price: \$30.00



BORDER NO. 1460

Price: \$25.00



BORDER NO. 1540

18 Point
Total Length 189 Picas

Price: \$30.00



BORDER NO. 1538

Price: \$30.00



BORDER NO. 1558

12 Point
Total Length 180 Picas

Price: \$25.00



BORDER NO. 1562

24 Point
Total Length 200 Picas

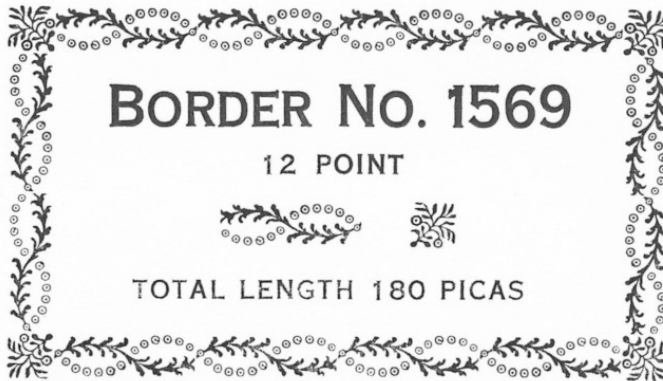
Price: \$30.00



BORDER NO. 1577 - 12PT

Price: \$25.00

SKYLINE TYPE FOUNDRY



BORDER NO. 1569

Price: \$25.00

SKYLINE TYPE FOUNDRY



BORDER NO. 1579

14 Point
Total Length 178 Picas

Price: \$30.00



BORDER NO. 1625

Price: \$30.00



BORDER NO. 1628

Price: \$30.00



BORDER NO. A-655

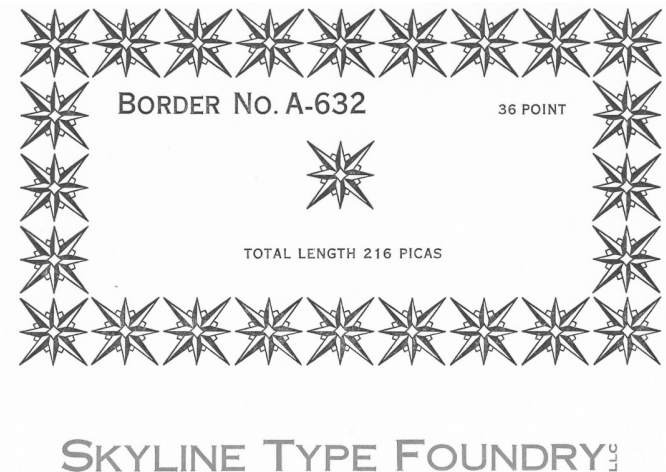
18 Point
Total Length 396 Picas

Price: \$30.00



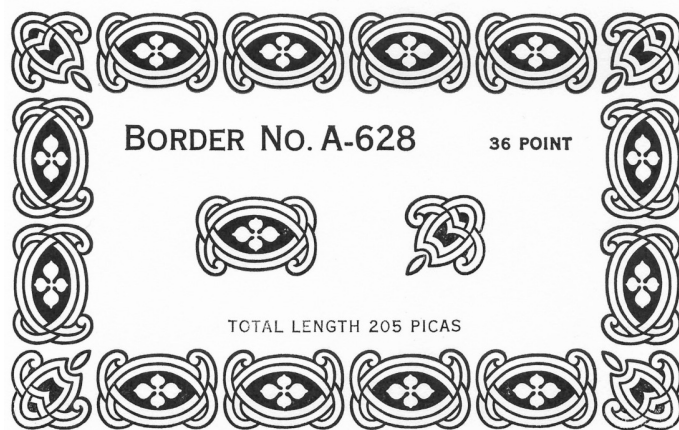
BORDER NO. A-654

Price: \$30.00



BORDER NO. A-632

Price: \$45.00



BORDER NO. A-628

Price: \$45.00



BORDER NO. E-1365

Price: \$30.00



BORDER NO. E-1346

This border was designed by Jack Townend and released by the [English] Monotype Corporation in 1958. Townend, who was born in Bingley, West Yorkshire, taught graphic design, lithography and printmaking at the Ruskin School of Art at the time this and other decorative elements were designed (1952-1961). Townend is also known for writing and illustrating a number of children's books. [Source: Wikipedia and Red Eel Press]

Price: \$30.00



BORDER NO. A-771

This Border previously bore the Skyline designation U-8. It has been renamed following its identification as a Ludlow design.

Price: \$30.00



BORDER NO. E-1348

This border was designed by Jack Townend and released by the [English] Monotype Corporation in 1958. Townend, who was born in Bingley, West Yorkshire, taught graphic design, lithography and printmaking at the Ruskin School of Art at the time this and other decorative elements were designed (1952-1961). Townend is also known for writing and illustrating a number of children's books. [Source: Wikipedia and Red Eel Press]

Price: \$30.00



BORDER NO. E-1240

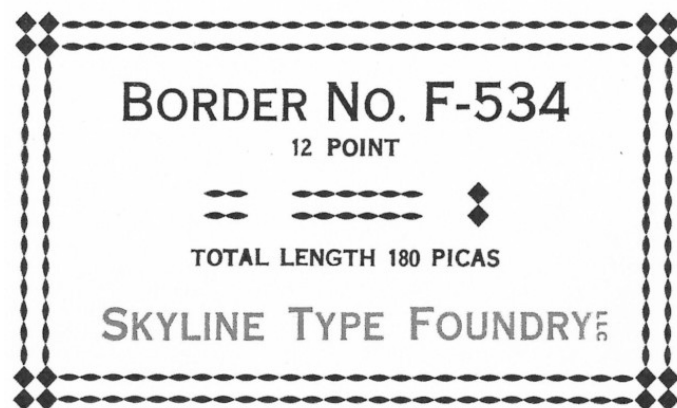
Price: \$45.00

SKYLINE TYPE FOUNDRY



BORDER NO. F-524

Price: \$25.00



BORDER NO. F-534

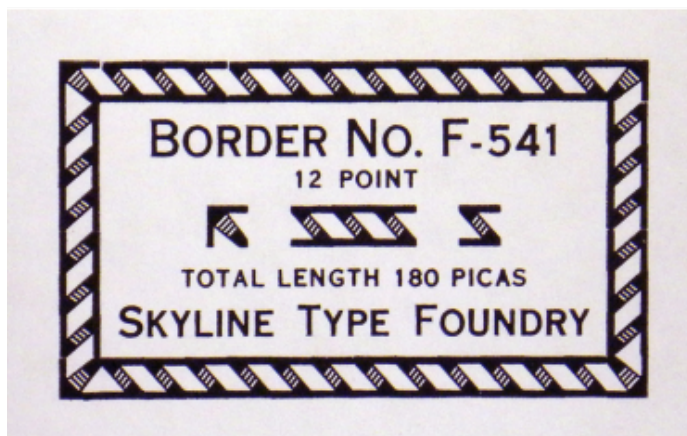
Price: \$25.00



BORDER NO. F-540 - 12PT

Price: \$25.00

SKYLINE TYPE FOUNDRY



BORDER NO. F-541

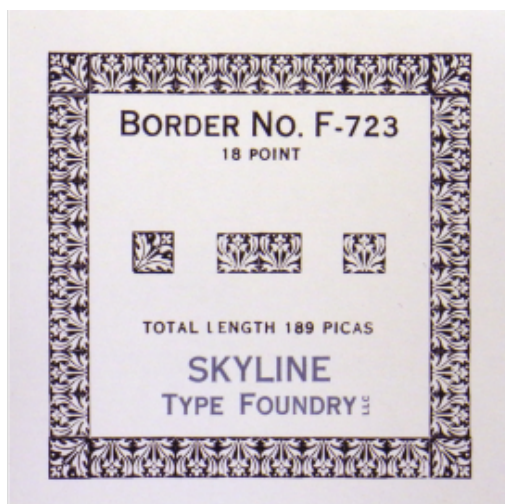
12 Point
Total Length 180 Picas

Price: \$25.00



BORDER NO. F-714

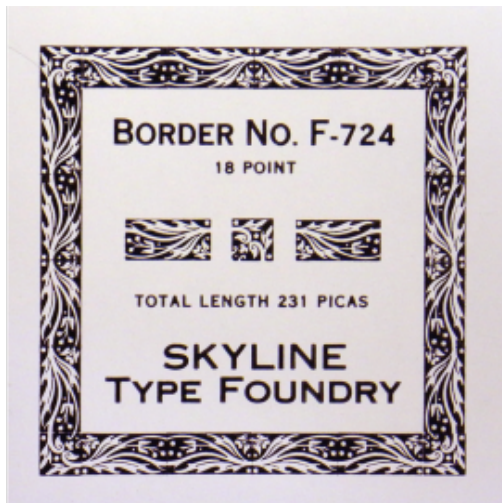
Price: \$30.00



BORDER NO. F-723

18 Point
Total Length 189 Picas

Price: \$30.00



BORDER NO. F-724

18 Point
Total Length 231 Picas

Price: \$30.00



BORDER NO. F-725

Price: \$30.00



BORDER NO. F-755

Price: \$30.00



BORDER NO. F-784

Price: \$30.00



BORDER NO. F-778

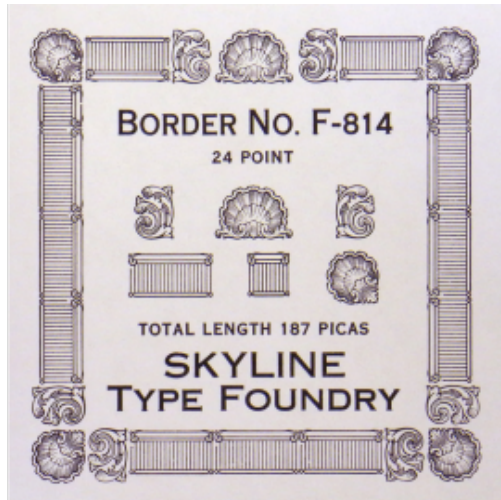
18 Point
Total Length 396 Picas

Price: \$50.00



BORDER NO. F-810 (TWO COLOR)

Price: \$50.00



BORDER NO. F-814

24 Point
Total Length 187 Picas

Price: \$30.00

BORDER NO. F-816

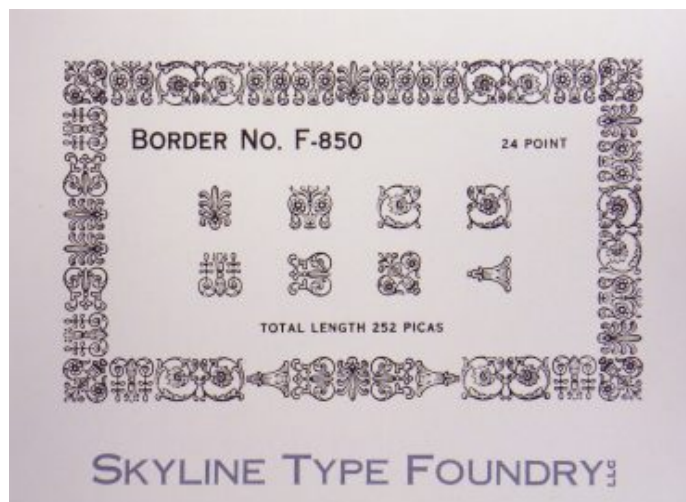
Price: \$30.00



BORDER NO. F-850

24 Point
Total Length 252 Picas

Price: \$45.00



BORDER NO. F-874

24 Point
Total Length 180 Picas

Price: \$30.00





BORDER NO. F-1022

12 Point
Total Length 180 Picas

Price: \$25.00



BORDER NO. F-1063

12 Point
Total Length 180 Picas

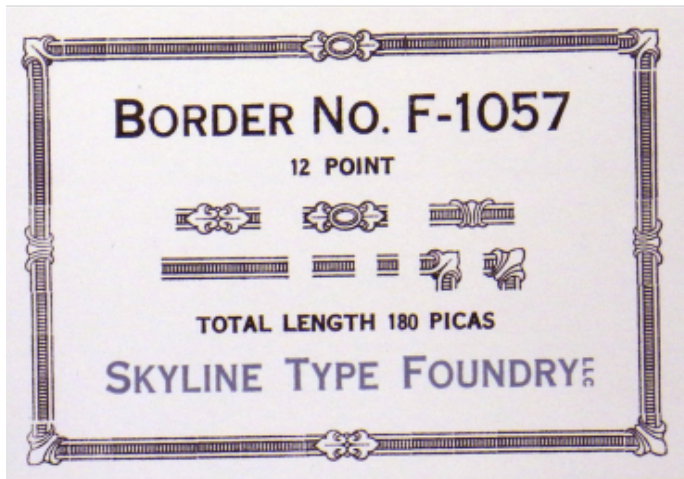
Price: \$25.00



BORDER NO. F-1064

12 Point
Total Length 180 Picas

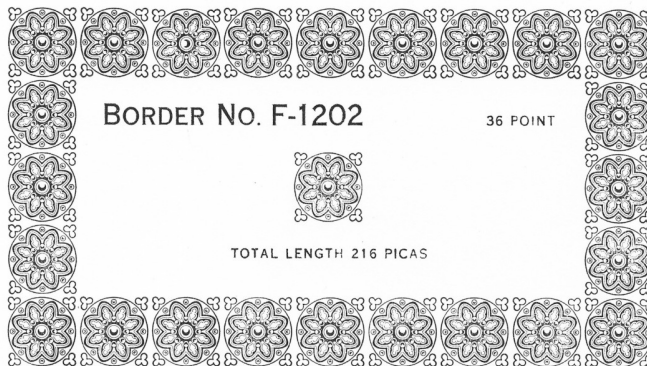
Price: \$25.00



BORDER NO. F-1057

12 Point
 Total Length 180 Picas

Price: \$30.00



BORDER NO. F-1202

Price: \$45.00

SKYLINE TYPE FOUNDRY



BORDER NO. F-1205

36 Point
 Total Length 147 Picas

Price: \$30.00



BORDER NO. F-1223

36 Point
Total Length 252 Picas

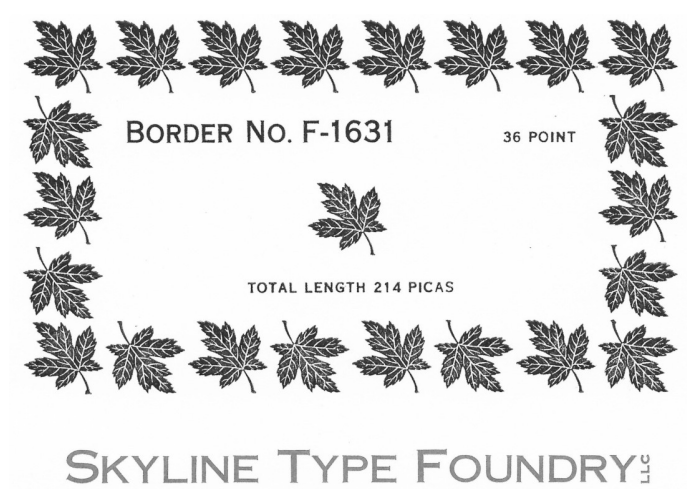
Price: \$45.00



BORDER NO. F-1617

24 Point
Total Length 180 Picas

Price: \$30.00



BORDER NO. F-1631

Price: \$45.00



BORDER NO. G-1

In the shop we call this one the "Peapod-Greyhound" Border.

Price: \$25.00



BORDER NO. G-7

Price: \$25.00



BORDER NO. G-14

18 Point
Total Length 189 Picas

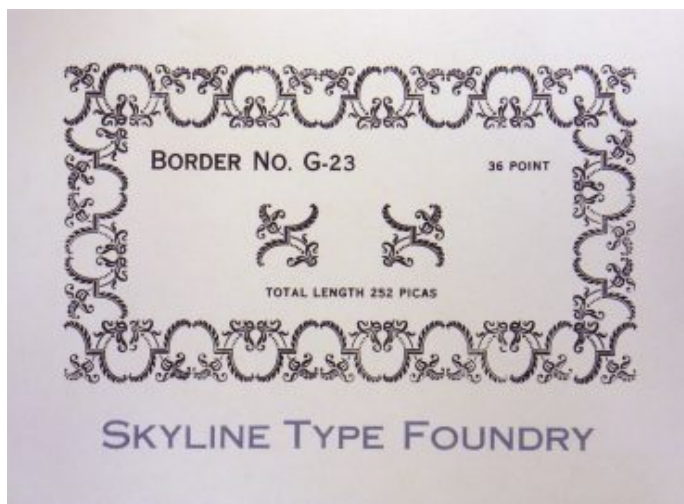
Price: \$30.00



BORDER NO. G-20

24 Point
Total Length 180 Picas

Price: \$30.00



BORDER NO. G-23

36 Point
Total Length 252 Picas

Price: \$45.00



BORDER NO. G-24

36 Point
Total Length 216 Picas

Price: \$45.00



BORDER NO. G-46

Price: \$25.00



BORDER NO. G-54

12 Point
 Total Length 180 Picas

Price: \$25.00



BORDER NO. G-69

Price: \$30.00



BORDER NO. G-73

Price: \$30.00



BORDER NO. G-71

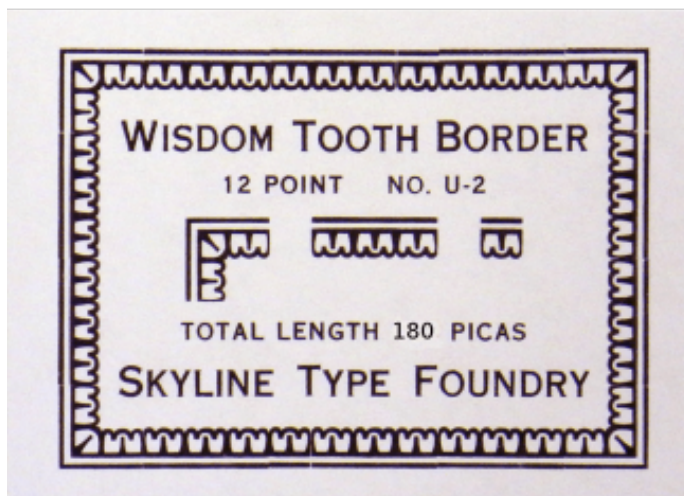
Price: \$30.00



BORDER NO. U-1

18 point
Total Length: 189 picas

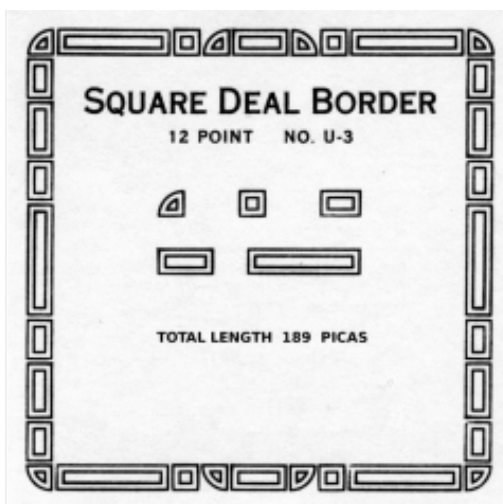
Price: \$30.00



BORDER NO. U-2

12 point
Total Length: 180 picas

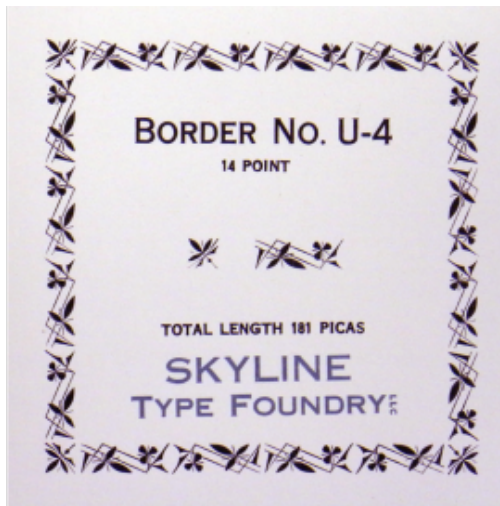
Price: \$25.00



BORDER NO. U-3

12 point
Total Length: 189 picas

Price: \$30.00



BORDER NO. U-4

14 Point
Total Length: 181 Picas

Price: \$30.00



BORDER NO. U-5

12 point
Total Length: 198 picas

Price: \$25.00



BORDER NO. U-6

24 Point
Total Length: 180 Picas

Price: \$30.00



BORDER NO. U-7

12 Point

Total Length 180 Picas

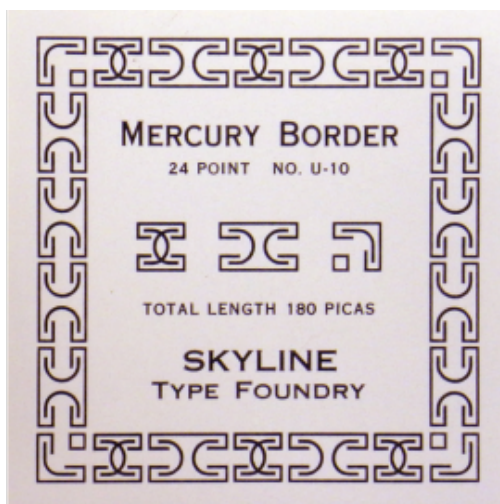
Price: \$25.00



BORDER NO. U-9

This marvelous antique originated with the Connor Type Foundry and is shown in four sizes in their 1888 catalog.

Price: \$30.00

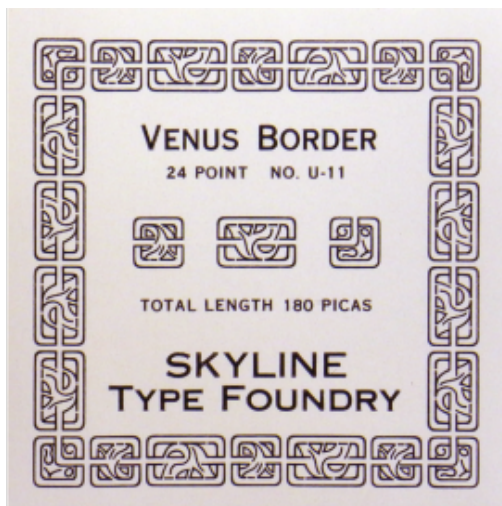


BORDER NO. U-10

24 point

Total Length; 180 picas

Price: \$30.00



BORDER NO. U-11

24 Point
Total Length 180 Picas

Price: \$30.00



BORDER NO. U-12

24 point
Total Length 179 Picas

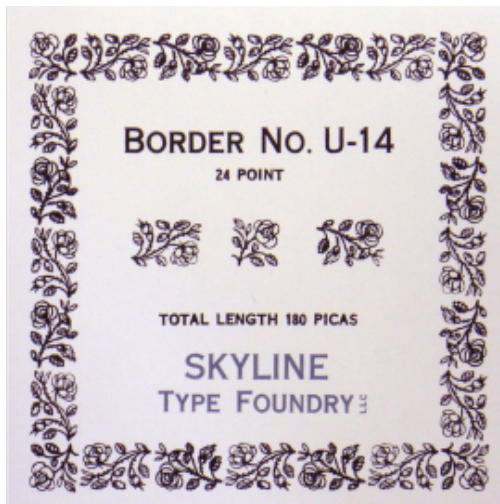
Price: \$30.00



BORDER NO. U-13

12 Point
Total Length 198 Picas

Price: \$25.00

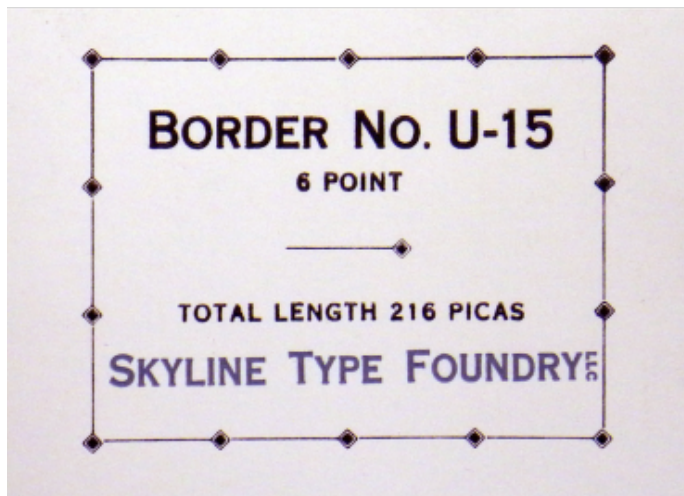


BORDER NO. U-14

These matrices were given to Skyline by a fine printer in Great Britain. We had no information about them, but after casting and posting for sale, we received this good note from David Wakefield:

Border U-14 is from the original 3-piece (Rose) 'Flower' No 6, engraved in the Double Pica size at the Fry Foundry in Bristol during the latter half of the eighteenth century. It descended through several acquisitions to Stephenson Blake where eventually, in 1922, it was revived as unit No 502 in a collection entitled 'Eighteenth Century Flowers & Borderings' made up mostly from their inherited matrices. It survived into the 70s as Miscellaneous Border 326/502.

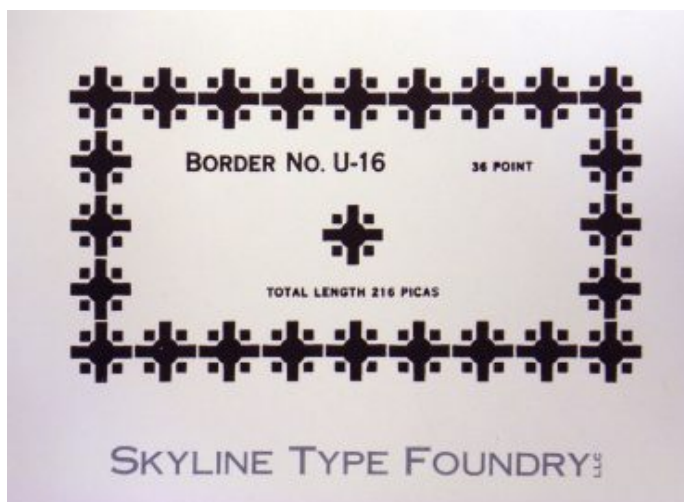
Price: \$30.00



BORDER NO. U-15

A single element, 6 by 36 points.
Total Length 210 picas

Price: \$20.00



BORDER NO. U-16

36 point
Total Length 216 picas

Price: \$45.00



BORDER NO. U-17

Cast from a matrix rescued from a defunct type foundry in India.

This element is used as a corner in Border No. U-21 (see below).

Price: \$30.00

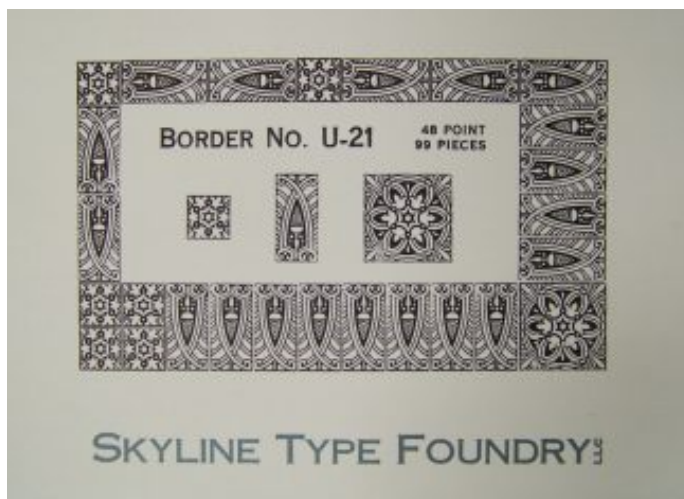


BORDER NO. U-18

18 point

Total length 189 picas

Price: \$30.00



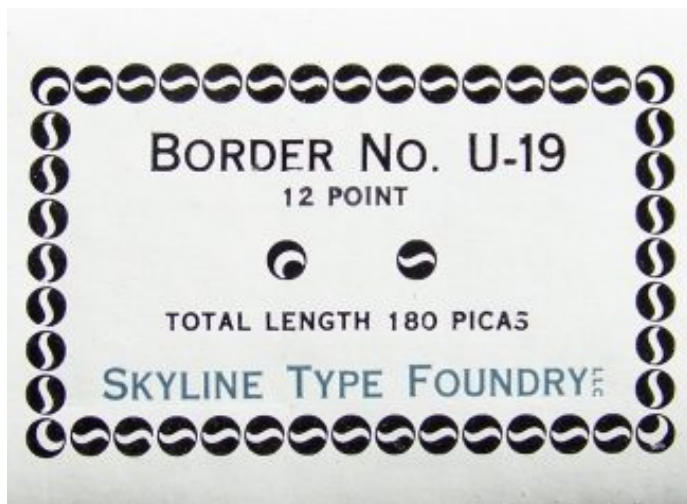
BORDER NO. U-21

This 3-element border can be set as 24 point or 48 point.

Cast from matrices rescued from a defunct type foundry in India.

The 48 point em-body corner is available separately as Border No. U-17 (see below).

Price: \$45.00



BORDER NO. U-19

Cast from matrices rescued from a defunct type foundry in India.

Caution: don't gaze at this Border very long or you will develop an unaccountable thirst for Diet Pepsi.

Price: \$25.00



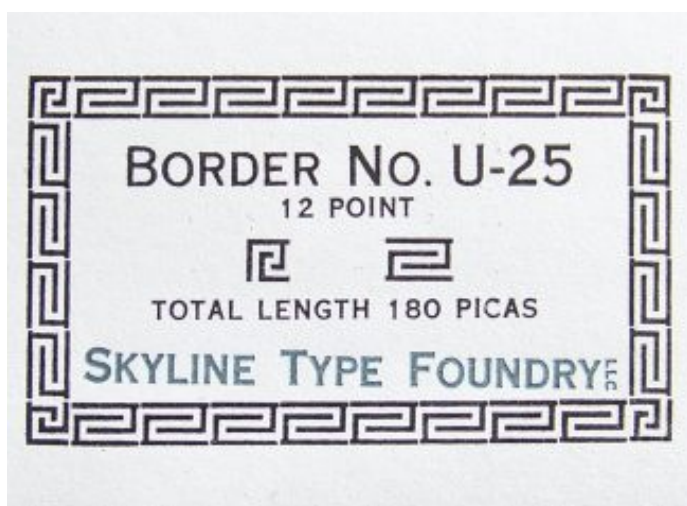
BORDER NO. U-20

24 Point with 48 Point Medallions

Total Length 180 Picas

LATE NOTE: This is in fact a 5-element border. One element was inadvertently omitted from the center part of the label—a matching mirror-image to the 24x48pt runner shown. Both are used in the composition around the edge. Our thanks to Dennis H. for catching this.

Price: \$35.00



BORDER NO. U-25

12 Point

Total Length 180 Picas

Price: \$25.00



BORDER NO. U-30

Price: \$30.00



BORDER NO. U-23

Price: \$25.00

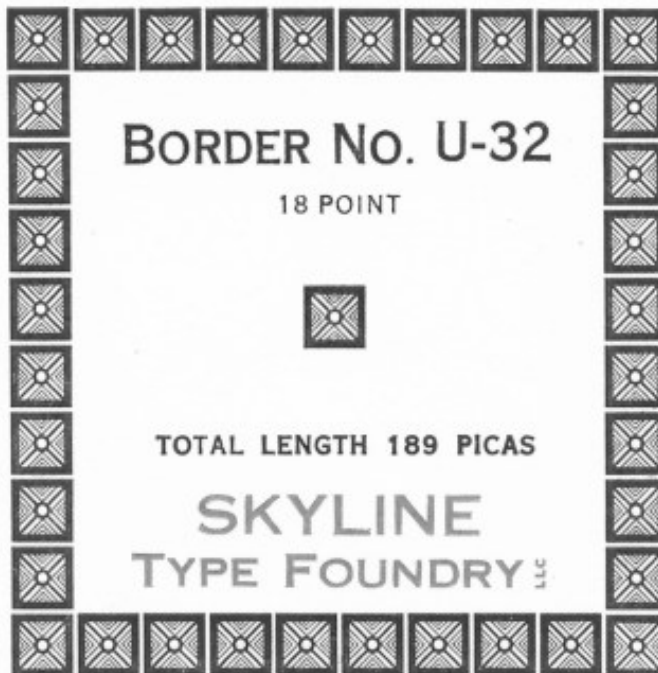
BORDER NO. U-31

October 1, 2021 This Border was released for sale today. Just got a note from longtime friend and private typesetter Phillip Driscoll advising that he has seen it in a catalog of the Barnhart Bros. & Spindler type foundry, as Munder-Hoyle Border No. 1998. That would make it at least a hundred years old. Phil also noted that there were two different corner elements furnished, one with the tulip pointing in, and the other out. Ours is the former—but we composed both it and the runners incorrectly—all should point *inward* when using this corner. That will be set right at such time the labels are reprinted.



Here is a link to the online specimen: [Munder Types](#)

Price: \$30.00



BORDER NO. U-32

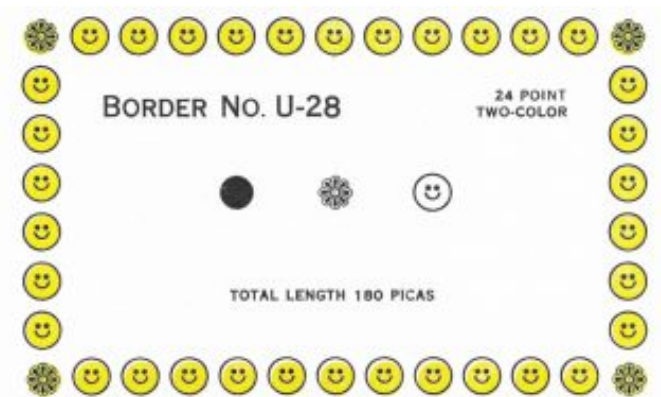
Price: \$30.00



SKYLINE TYPE FOUNDRY LLC

BORDER NO. U-27

Price: \$45.00



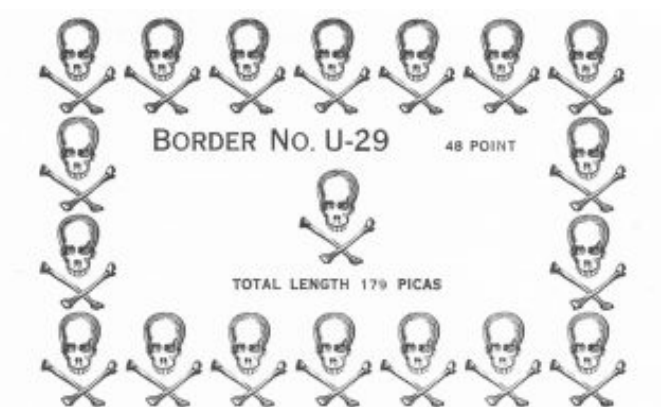
SKYLINE TYPE FOUNDRY LLC

BORDER NO. U-28

While producing Smiley, it occurred to our casterman, T.H., that a type face this goofy needs a companion border just as ridiculous. So we pulled out the cap O, which is simply a smiley-face, threw in some hippie flowers for corners, and backed it all up with solid dots for a two-color design.

In the second photo above, Border No. U-28 and Smiley are shown in combination.

Price: \$50.00



SKYLINE TYPE FOUNDRY LLC

BORDER NO. U-29

This antique Skull & Bones is cast on a 48pt body, with 42pt set. Collection contains 50 pieces.

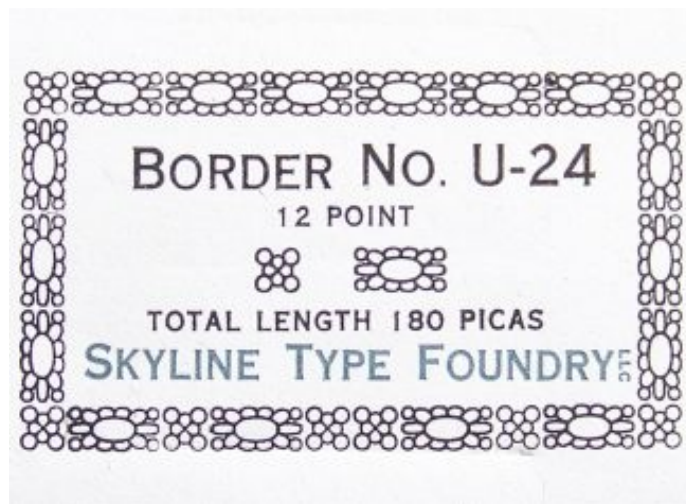
Price: \$45.00



BORDER NO. U-26

A seven-element outline Border in 12 point, with three pairs of mirror-image elements in different set widths, and a corner that's unique in not being diagonally symmetrical. The source of this design is unknown but it seems to show influence from both arabesque and art nouveau. The matrices came from a defunct type foundry in India.

Price: \$30.00



BORDER NO. U-24

12 Point

Total Length 180 Picas

Price: \$25.00



BORDER NO. U-22

A revival of American Type Founders **Art Border No. 23**, shown in their 1899 catalog.

Here is a very interesting backstory about these very matrices that turned up after we announced this Border. The author is Denver professional printer Jim Meagher and the article is a two-page spread from the August 1981 issue of *Tumbleweed*, his personal amateur journal published for distribution within the National Amateur Press Association.

[A Border Story](#)

Price: \$30.00

